

# DECEMBERPROV 2022



Kodnr: 9-8527 • Stbnr: 93357 • Pris: 370 kr.  
511, 480kr/dos.



| HELHET Baserat på 0 Döttrar i 0 Bes. (78% Rel) |       |         |      |   |   |                 |
|--|-------|---------|------|---|---|-----------------|
| TYP  | 1.51  | Juveler | 1.21 |   |   |                 |
| BWC  | -0.39 | Ben     | 0.41 |   |   |                 |
|  | -2    | -1      | 0    | 1 | 2 |                 |
| Storlek  |       |         |      |   |   | +1.57 Restlig   |
| Styrka   |       |         |      |   |   | +0.06 Stark     |
| Kroppsdjup                                     |       |         |      |   |   | +0.48 Djup      |
| Kroppsform                                     |       |         |      |   |   | +2.04 Öppen     |
| Korslutning                                    |       |         |      |   |   | -0.19 Hög       |
| Korsbredd                                      |       |         |      |   |   | +0.76 Brett     |
| Benvinkel                                      |       |         |      |   |   | -1.10 Rak       |
| Ben Bakifrån                                   |       |         |      |   |   | +0.35 Parallell |
| Kotvinkel                                      |       |         |      |   |   | +0.96 Brant     |
| Klövar & Ben                                   |       |         |      |   |   | +0.84 Hög       |
| Framjuveler                                    |       |         |      |   |   | +1.56 Starkt    |
| Bakjuvelhöjd                                   |       |         |      |   |   | +1.75 Hög       |
| Bakjuvelbredd                                  |       |         |      |   |   | +1.91 Brett     |
| Juveligament                                   |       |         |      |   |   | +0.44 Starkt    |
| Juvelerdjup                                    |       |         |      |   |   | +1.51 Grunt     |
| Spenplac. Fram                                 |       |         |      |   |   | +0.49 Tätt      |
| Spenplac. Bak                                  |       |         |      |   |   | +0.23 Tätt      |
| Spenlängd                                      |       |         |      |   |   | -0.56 Kort      |

| STAMTAVLA |                           |
|-----------|---------------------------|
| Far       | PEAK ALTAZAZZLE-ET        |
| DAM       | PEAK ANNALISE-ET          |
| MGS       | PROGENESIS GUINNESS       |
| MGD       | PEAK ANTIDOTE-ET          |
| MGGS      | S-S-I MONTROSS JEDI-ET    |
| MGGD      | COYNE-FARMS YODER ANNA-ET |

- Fett + Protein 180 CFP
- Robot
- Kvigtjur

## AltaALANZO

011H015619

PEAK ALTAALANZO-ET

AltaZAZZLE X GUINNESS X JEDI

H0840M003215425521 | DOB 5/24/2020

Kappa-Casein AB | Beta-Casein A2A2

Haplotyper HH1F HH2F HH3F HH4F HH5F HCFD HH6C

Genetiska koder TC TD TL TP TR TV TY

aAa 213 | DMS 126,123 | EFI 11.4 % | RHA 99%

Nuvarande test USA-202212

CDCB & HA-USA Genetic Evaluations 12/2022

TPI **3006** NM\$ **982**



### PRODUKTION

|         |           |         |      |       |
|---------|-----------|---------|------|-------|
| Mjolk   | +1324 Lbs | 80% Rel | CM\$ | \$997 |
| Protein | +66 Lbs   | +0.08%  | FM\$ | \$859 |
| Fett    | +114 Lbs  | +0.22%  | GM\$ | \$947 |

### Mjölkhastighet 107

Baserat på 0 Döttrar i 0 Bes. (100% US Döttrar)

Mjolk - US Döttr.

Fettavkastning US Döttr.

Proteinavkastning - US Döttr.

### HÄLSOEGENSKAPER

|                |        |                   |       |
|----------------|--------|-------------------|-------|
| Livslängd      | +3.9   | Dotterfertilitet  | -0.3  |
| Kofertilitet   | 0.7    | Kvigfertilitet    | -0.3  |
| Cow Livability | +3.0   | Heifer Livability | +1.0  |
| Celltal        | +2.99  | MAST              | 0.1%  |
| METR           | 1.8%   | KETO              | 1.5%  |
| DA             | 0.1%   | RETP              | 0.5%  |
| Feed Saved     | -69    | MFEV              | +0.1% |
| Zoetis DWP\$   | \$1036 | Zoetis WT\$       | \$-47 |
| Zoetis CW\$    | \$-17  |                   |       |

### KALVNINGSEGENSKAPER

|                         |      |         |                 |      |         |
|-------------------------|------|---------|-----------------|------|---------|
| Kalvningsegenskaper Far | 1.9% | 76% Rel | Far Dödsfödslar | 6.4% | 65% Rel |
| Kalvningsegenskaper Dtr | 2.3% | 70% Rel | MF Dödsfödslar  | 5.4% | 64% Rel |



Alta's FutureStar line-up erbjuder ett urval av genomiska topptjurar med hög fertilitet och lätta kalvningar.



Alta ConceptPlus är ett utvärderingssystem för att med noggrannhet kunna välja ut de tjurar med högsta fertilitet.



Alta G-Star's ger dig högre möjligheter att snabbt nå genetiska framsteg på din gård. G-Star status ges endast till genomiskt testade tjurar. Tjurar som ger dig maximal genetisk potential för att möta dina avelsmål.



Alta511 Sexed Ultra får oddsen till din fördel med hög andel kvigspermier. Öka antalet kvigor i din besättning för att expandera din mjölkproduktion.



Alta511 Concept Plus är tjurar med hög fertilitet av sorterade kvigspermier. Bepröva i praktiken med goda resultat.



Alta HealthPlus representerar tjurar som ger bättre hälsa till deras avkomma. Fokusen ligger på längre livslängd, lättare kalvningar, lägre celltal och högre dotterfertilitet.

Är du intresserad av att jobba hos oss?  
Kontakta oss via epost eller telefon.  
Kontaktinformation hittar du på  
baksidan av katalogen.

HOLSTEIN Genom

HOLSTEIN PRÖVAD

HOLSTEIN RÖD

JERSEY



Kodnr: 9-8667 • Stbnr: 93485 • Pris: 327 kr.  
511, 460kr/dos.



## AltaTUBULAR

011H016040

PEAK ALTATUBULAR-ET

AltaHAILED X PURSUIT X POSITIVE

HO840M003224928363 | DOB 2/1/2021

Kappa-Casein AA | Beta-Casein A1A2

Haplotyper HH1F HH2F HH3F HH4F HH5F HCDF HH6F

Genetiska koder TC TD TL TV TY

aAa 234 | DMS 456,345 | EFI 10.7% | RHA 99%

Nuvarande test USA-202212

CDCB & HA-USA Genetic Evaluations 12/2022

HELHET Baserat på 0 Döttrar i 0 Bes. (77% Rel)

|     |      |       |      |
|-----|------|-------|------|
| TYP | 1.78 | Juvel | 1.53 |
| BWC | 1.11 | Ben   | 0.29 |

|                | -2 | -1 | 0 | 1 | 2 |                 |
|----------------|----|----|---|---|---|-----------------|
| Storlek        |    |    |   |   |   | +1.92 Reslig    |
| Styrka         |    |    |   |   |   | +1.37 Stark     |
| Kroppsdjup     |    |    |   |   |   | +1.16 Djup      |
| Kroppform      |    |    |   |   |   | +1.37 Öppen     |
| Korslutning    |    |    |   |   |   | +0.05 Sluttande |
| Korsbredd      |    |    |   |   |   | +1.39 Brett     |
| Benvinkel      |    |    |   |   |   | +0.67 Vinklad   |
| Ben Bakifrån   |    |    |   |   |   | +0.44 Parallell |
| Kotvinkel      |    |    |   |   |   | +0.72 Brant     |
| Klövar & Ben   |    |    |   |   |   | +0.76 Hög       |
| Framjuvel      |    |    |   |   |   | +1.99 Starkt    |
| Bakjuvelhöjd   |    |    |   |   |   | +2.24 Hög       |
| Bakjuvelbredd  |    |    |   |   |   | +2.65 Brett     |
| Juveligament   |    |    |   |   |   | +0.39 Starkt    |
| Juveldjup      |    |    |   |   |   | +1.67 Grunt     |
| Spennlac. Fram |    |    |   |   |   | +0.34 Tät       |
| Spennlac. Bak  |    |    |   |   |   | +0.11 Tät       |
| Spennlängd     |    |    |   |   |   | +0.30 Lång      |

### STAMTAVLA

|      |                     |
|------|---------------------|
| Far  | MATCREST HAILED-ET  |
| DAM  | PEAK DINAS-ET       |
| MGS  | PINE-TREE-I PURSUIT |
| MGD  | PEAK DORI-ET        |
| MGGS | PROGENESIS POSITIVE |
| MGGD | PEAK DIOR-ET        |

- Mjolk
- Robot. Mjolkhastighet 106
- Kvigtjur

TPI

2893

NM\$

837



### PRODUKTION

|         |           |         |      |       |
|---------|-----------|---------|------|-------|
| Mjolk   | +1621 Lbs | 79% Rel | CM\$ | \$845 |
| Protein | +64 Lbs   | +0.05%  | FM\$ | \$765 |
| Fett    | +94 Lbs   | +0.11%  | GM\$ | \$770 |

### Mjolkhastighet 106

Baserat på 0 Döttrar i 0 Bes. (100% US Döttrar)

Mjolk - US Döttr.

Fettavkastning US Döttr.

Proteinavkastning - US Döttr.

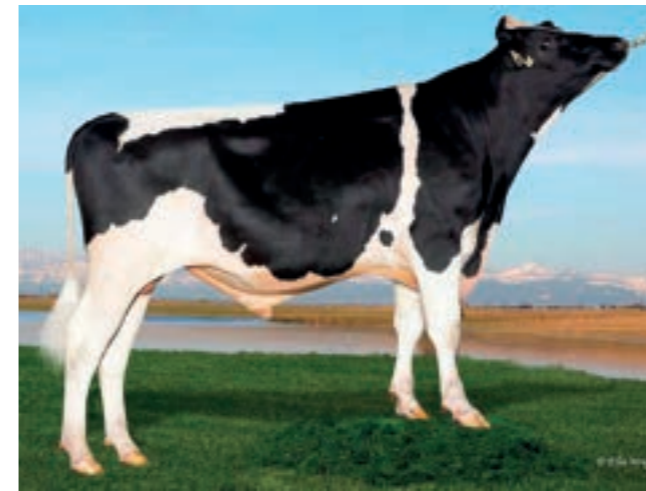
### HÄLSOEGENSKAPER

|                |       |                   |      |
|----------------|-------|-------------------|------|
| Livslängd      | +3.5  | Dotterfertilitet  | -1.5 |
| Kofertilitet   | -0.9  | Kvigfertilitet    | 1.5  |
| Cow Livability | +0.1  | Heifer Livability | +0.9 |
| Celltal        | +3.00 | MAST              | 1.3% |
| METR           | 1.7%  | KETO              | 2.3% |
| DA             | 0.5%  | RETP              | 0.0% |
| Feed Saved     | -126  | MFEV              | 0.0% |
| Zoetis DWP\$   | \$846 | Zoetis WT\$       | \$31 |
| Zoetis CW\$    | \$-50 |                   |      |

### KALVNINGSEGENSKAPER

|                         |      |         |                 |      |         |
|-------------------------|------|---------|-----------------|------|---------|
| Kalvningsegenskaper Far | 2.3% | 63% Rel | Far Dödsfödslar | 6.5% | 58% Rel |
| Kalvningsegenskaper Dtr | 1.8% | 57% Rel | MF Dödsfödslar  | 3.9% | 54% Rel |

Kodnr: 9-8578 • Stbnr: 93477 • Pris: 330 kr.  
511, 460kr/dos.



## AltaBACKLASH

011H015811

PEAK ALTABACKLASH-ET

FASTBALL X POSITIVE X MEDLEY

HO840M003215425363 | DOB 4/10/2020

Kappa-Casein BE | Beta-Casein A1A2

Haplotyper HH1F HH2F HH3F HH4F HH5F HCDF HH6F

Genetiska koder TC TD TL TR TV TY

aAa 432 | DMS 135,345 | EFI 10.6% | RHA 99%

Nuvarande test USA-202212

CDCB & HA-USA Genetic Evaluations 12/2022

HELHET Baserat på 0 Döttrar i 0 Bes. (79% Rel)

|     |       |       |      |
|-----|-------|-------|------|
| TYP | 1.33  | Juvel | 1.56 |
| BWC | -0.72 | Ben   | 0.95 |

|                | -2 | -1 | 0 | 1 | 2 |                 |
|----------------|----|----|---|---|---|-----------------|
| Storlek        |    |    |   |   |   | -0.28 Mindre    |
| Styrka         |    |    |   |   |   | +0.02 Stark     |
| Kroppsdjup     |    |    |   |   |   | -0.05 Grunt     |
| Kroppform      |    |    |   |   |   | +1.45 Öppen     |
| Korslutning    |    |    |   |   |   | -0.21 Hög       |
| Korsbredd      |    |    |   |   |   | +0.11 Brett     |
| Benvinkel      |    |    |   |   |   | -0.12 Rak       |
| Ben Bakifrån   |    |    |   |   |   | +0.79 Parallell |
| Kotvinkel      |    |    |   |   |   | +0.52 Brant     |
| Klövar & Ben   |    |    |   |   |   | +0.85 Hög       |
| Framjuvel      |    |    |   |   |   | +1.46 Starkt    |
| Bakjuvelhöjd   |    |    |   |   |   | +2.04 Hög       |
| Bakjuvelbredd  |    |    |   |   |   | +2.40 Brett     |
| Juveligament   |    |    |   |   |   | +0.78 Starkt    |
| Juveldjup      |    |    |   |   |   | +0.21 Grunt     |
| Spennlac. Fram |    |    |   |   |   | +0.64 Tät       |
| Spennlac. Bak  |    |    |   |   |   | +0.87 Tät       |
| Spennlängd     |    |    |   |   |   | -0.83 Kort      |

### STAMTAVLA

|      |                           |
|------|---------------------------|
| Far  | BOMAZ FASTBALL-ET         |
| DAM  | PEAK MARACA-ET            |
| MGS  | PROGENESIS POSITIVE       |
| MGD  | PINE-TREE MANDOLIN-ET     |
| MGGS | ABS MEDLEY-ET             |
| MGGD | SEAGULL-BAY MY OCTAVIA-ET |

- Mjolk
- Robot
- Kvigtjur

TPI

2898

NM\$

936



### PRODUKTION

|         |           |         |      |       |
|---------|-----------|---------|------|-------|
| Mjolk   | +1446 Lbs | 81% Rel | CM\$ | \$947 |
| Protein | +60 Lbs   | +0.05%  | FM\$ | \$855 |
| Fett    | +86 Lbs   | +0.10%  | GM\$ | \$859 |

### Mjolkhastighet 101

Baserat på 0 Döttrar i 0 Bes. (100% US Döttrar)

Mjolk - US Döttr.

Fettavkastning US Döttr.

Proteinavkastning - US Döttr.

### HÄLSOEGENSKAPER

|                |       |                   |      |
|----------------|-------|-------------------|------|
| Livslängd      | +5.3  | Dotterfertilitet  | -1.2 |
| Kofertilitet   | -0.9  | Kvigfertilitet    | 1.4  |
| Cow Livability | +1.3  | Heifer Livability | +1.0 |
| Celltal        | +2.91 | MAST              | 1.9% |
| METR           | 1.3%  | KETO              | 2.0% |
| DA             | 0.7%  | RETP              | 0.0% |
| Feed Saved     | 117   | MFEV              | 0.0% |
| Zoetis DWP\$   | \$955 | Zoetis WT\$       | \$69 |
| Zoetis CW\$    | \$-12 |                   |      |

### KALVNINGSEGENSKAPER

|                         |      |         |                 |      |         |
|-------------------------|------|---------|-----------------|------|---------|
| Kalvningsegenskaper Far | 1.8% | 77% Rel | Far Dödsfödslar | 5.7% | 66% Rel |
| Kalvningsegenskaper Dtr | 2.3% | 70% Rel | MF Dödsfödslar  | 5.2% | 64% Rel |

Kodnr: 9-8671 • Stbnr: 93639 • Pris: 311 kr.  
511, 460 kr/dos.



## AltaMAXRATE

011H016115

PEAK ALTAMAXRATE-ET

AltaWHEELHOUSE X TORRO X DUKE

HO840M003224928412 | DOB 4/20/2021

Kappa-Casein AB | Beta-Casein A2A2

Haplotyper HH1F HH2F HH3F HH4F HH5F HCDF HH6F

Genetiska koder TC TD TL TR TV TY

aAa 156 | DMS 456,246 | EFI 11.1% | RHA 99%

Nuvarande test USA-202212

CDCB & HA-USA Genetic Evaluations 12/2022

HELHET Baserat på 0 Döttrar i 0 Bes. (77% Rel)

|     |      |        |       |
|-----|------|--------|-------|
| TYP | 0.58 | Juvert | 0.72  |
| BWC | 0.31 | Ben    | -0.48 |

|                | -2 | -1 | 0 | 1 | 2 |                 |
|----------------|----|----|---|---|---|-----------------|
| Storlek        |    |    |   |   |   | +1.18 Reslig    |
| Styrka         |    |    |   |   |   | +0.76 Stark     |
| Kroppsdjup     |    |    |   |   |   | +0.70 Djup      |
| Kroppsform     |    |    |   |   |   | +1.41 Öppen     |
| Korslutning    |    |    |   |   |   | +2.61 Sluttande |
| Korsbredd      |    |    |   |   |   | +0.57 Brett     |
| Benvinkel      |    |    |   |   |   | -0.95 Rak       |
| Ben Bakifrån   |    |    |   |   |   | -0.51 Vinklad   |
| Kotvinkel      |    |    |   |   |   | +0.26 Brant     |
| Klövar & Ben   |    |    |   |   |   | -0.11 Låg       |
| Framjuvert     |    |    |   |   |   | +0.46 Starkt    |
| Bakjuvert      |    |    |   |   |   | +1.12 Högt      |
| Bakjuvert      |    |    |   |   |   | +2.09 Brett     |
| Juvertligament |    |    |   |   |   | +0.56 Starkt    |
| Juvertdjup     |    |    |   |   |   | +0.23 Grunt     |
| Spennlac. Fram |    |    |   |   |   | +1.10 Tät       |
| Spennlac. Bak  |    |    |   |   |   | +1.26 Tät       |
| Spennlängd     |    |    |   |   |   | -0.92 Kort      |

### STAMTAVLA

|      |                            |
|------|----------------------------|
| Far  | PEAK WHEELHOUSE-ET         |
| DAM  | PEAK MARGERY-ET            |
| MGS  | MAPLEHURST DELROY TORRO-ET |
| MGD  | PEAK MARGE-ET              |
| MGGs | S-S-I MONTROSS DUKE-ET     |
| MGGD | PEAK MYSTIQUE-ET           |

- Fett, Protein 170
- Robot
- Kvigtjur
- aAa 156

|     |      |      |     |
|-----|------|------|-----|
| TPI | 2886 | NM\$ | 967 |
|-----|------|------|-----|



### PRODUKTION

|         |           |         |      |       |
|---------|-----------|---------|------|-------|
| Mjöl    | +1277 Lbs | 79% Rel | CM\$ | \$986 |
| Protein | +65 Lbs   | +0.09%  | FM\$ | \$837 |
| Fett    | +105 Lbs  | +0.19%  | GM\$ | \$921 |

### Mjölkhastighet 100

Baserat på 0 Döttrar i 0 Bes. (100% US Döttrar)

Mjöl - US Döttr.

Fettavkastning US Döttr.

Proteinavkastning - US Döttr.

### HÄLSOEGENSKAPER

|                |        |                   |       |
|----------------|--------|-------------------|-------|
| Livslängd      | +4.3   | Dotterfertilitet  | -1.0  |
| Kofertilitet   | 0.3    | Kvigtfertilitet   | 2.9   |
| Cow Livability | -0.7   | Heifer Livability | +0.7  |
| Celltal        | +2.83  | MAST              | 1.0%  |
| METR           | 0.5%   | KETO              | 1.5%  |
| DA             | 0.4%   | RETP              | -0.4% |
| Feed Saved     | 107    | MFEV              | 0.0%  |
| Zoetis DWP\$   | \$1029 | Zoetis WT\$       | \$103 |
| Zoetis CW\$    | \$-28  |                   |       |

### KALVNINGSEGENSKAPER

|                         |      |         |                 |      |         |
|-------------------------|------|---------|-----------------|------|---------|
| Kalvningsegenskaper Far | 2.0% | 62% Rel | Far Dödsfödslar | 6.0% | 60% Rel |
| Kalvningsegenskaper Dtr | 2.1% | 57% Rel | MF Dödsfödslar  | 5.3% | 54% Rel |

Kodnr: 9-8524 • Stbnr: 93290 • Pris: 310 kr.  
511, 440 kr/dos.



## AltaTRACKSTER

011H015526

PEAK ALTATRACKSTER-ET

PURSUIT X RESOLVE X YODER

HO840M003205436268 | DOB 8/16/2019

Kappa-Casein AB | Beta-Casein A1A2

Haplotyper HH1F HH2F HH3F HH4F HH5F HCDF HH6F

Genetiska koder TC TD TL TP TR TV TY

aAa 342 | DMS 246,456 | EFI 10.6% | RHA 99%

Nuvarande test USA-202212

CDCB & HA-USA Genetic Evaluations 12/2022

HELHET Baserat på 0 Döttrar i 0 Bes. (80% Rel)

|     |      |        |      |
|-----|------|--------|------|
| TYP | 1.84 | Juvert | 1.79 |
| BWC | 1.69 | Ben    | 0.42 |

|                | -2 | -1 | 0 | 1 | 2 |                 |
|----------------|----|----|---|---|---|-----------------|
| Storlek        |    |    |   |   |   | +2.13 Reslig    |
| Styrka         |    |    |   |   |   | +1.53 Stark     |
| Kroppsdjup     |    |    |   |   |   | +0.91 Djup      |
| Kroppsform     |    |    |   |   |   | +0.54 Öppen     |
| Korslutning    |    |    |   |   |   | +0.04 Sluttande |
| Korsbredd      |    |    |   |   |   | +1.66 Brett     |
| Benvinkel      |    |    |   |   |   | -1.31 Rak       |
| Ben Bakifrån   |    |    |   |   |   | +1.23 Parallell |
| Kotvinkel      |    |    |   |   |   | +2.19 Brant     |
| Klövar & Ben   |    |    |   |   |   | +0.68 Högt      |
| Framjuvert     |    |    |   |   |   | +2.48 Starkt    |
| Bakjuvert      |    |    |   |   |   | +2.19 Högt      |
| Bakjuvert      |    |    |   |   |   | +2.35 Brett     |
| Juvertligament |    |    |   |   |   | +1.04 Starkt    |
| Juvertdjup     |    |    |   |   |   | +2.37 Grunt     |
| Spennlac. Fram |    |    |   |   |   | +0.98 Tät       |
| Spennlac. Bak  |    |    |   |   |   | +1.08 Tät       |
| Spennlängd     |    |    |   |   |   | +0.42 Lång      |

### STAMTAVLA

|      |                             |
|------|-----------------------------|
| Far  | PINE-TREE-I PURSUIT         |
| DAM  | HERMANVILLE DASHE-ET        |
| MGS  | BLUMENFELD JEDI RESOLVE-ET  |
| MGD  | HERMANVILLE YODER 4762-TW   |
| MGGs | WOODCREST MOGUL YODER-ET    |
| MGGD | PINE-TREE DASHE OAK 5770-ET |

- Juvertjur
- Låga celler
- Robot, mjölkhastighet 107

|     |      |      |     |
|-----|------|------|-----|
| TPI | 2859 | NM\$ | 823 |
|-----|------|------|-----|



### PRODUKTION

|         |          |         |      |       |
|---------|----------|---------|------|-------|
| Mjöl    | +923 Lbs | 82% Rel | CM\$ | \$844 |
| Protein | +50 Lbs  | +0.07%  | FM\$ | \$706 |
| Fett    | +62 Lbs  | +0.09%  | GM\$ | \$741 |

### Mjölkhastighet 107

Baserat på 0 Döttrar i 0 Bes. (100% US Döttrar)

Mjöl - US Döttr.

Fettavkastning US Döttr.

Proteinavkastning - US Döttr.

### HÄLSOEGENSKAPER

|                |       |                   |       |
|----------------|-------|-------------------|-------|
| Livslängd      | +5.7  | Dotterfertilitet  | -0.2  |
| Kofertilitet   | 0.4   | Kvigtfertilitet   | 1.2   |
| Cow Livability | +2.7  | Heifer Livability | +1.3  |
| Celltal        | +2.60 | MAST              | 3.6%  |
| METR           | -0.3% | KETO              | 1.7%  |
| DA             | 0.7%  | RETP              | -0.9% |
| Feed Saved     | -38   | MFEV              | 0.0%  |
| Zoetis DWP\$   | \$877 | Zoetis WT\$       | \$164 |
| Zoetis CW\$    | \$8   |                   |       |

### KALVNINGSEGENSKAPER

|                         |      |         |                 |      |         |
|-------------------------|------|---------|-----------------|------|---------|
| Kalvningsegenskaper Far | 2.2% | 88% Rel | Far Dödsfödslar | 6.2% | 79% Rel |
| Kalvningsegenskaper Dtr | 1.3% | 70% Rel | MF Dödsfödslar  | 3.8% | 64% Rel |



Kodnr: 9-8577 • Stbnr: 93476 • Pris: 330 kr.  
511, 450 kr/dos.



## AltaESTABLISH

011H015803

CO-OP ALTAESTABLISH-ET

AltaTIKI X ACHIEVER X SILVER

H0840M003217428956 | DOB 8/16/2020

Kappa-Casein BB | Beta-Casein A2A2

Haplotyper HH1F HH2F HH3F HH4F HH5F HCDF HH6F

Genetiska koder TC TD TL TV TY

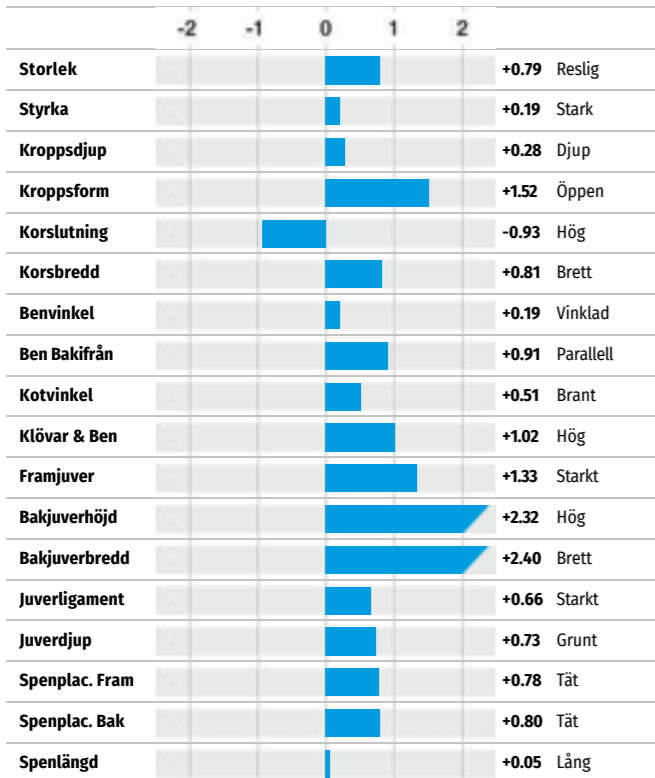
aAa 234 | DMS 345,135 | EFI 12.0 % | RHA 99%

Nuvarande test USA-202212

CDCB & HA-USA Genetic Evaluations 12/2022

HELHET Baserat på 0 Döttrar i 0 Bes. (78% Rel)

|     |       |       |      |
|-----|-------|-------|------|
| TYP | 1.42  | Juvel | 1.52 |
| BWC | -0.24 | Ben   | 0.87 |



### STAMTAVLA

|      |                             |
|------|-----------------------------|
| Far  | PEAK ALTATIKI-ET            |
| DAM  | FARIA-BROS ACH BARCELONA-ET |
| MGS  | ABS ACHIEVER-ET             |
| MGD  | PINE-TREE 1610 SILV 6750-ET |
| MGGG | SEAGULL-BAY SILVER-ET       |
| MGGD | FARNEAR-TBR-BH VARSITY-ET   |

- Mjolk
- Robot
- Kvigtjur

TPI **2803** NM\$ **809**



### PRODUKTION

|         |           |         |      |       |
|---------|-----------|---------|------|-------|
| Mjolk   | +1416 Lbs | 81% Rel | CM\$ | \$817 |
| Protein | +54 Lbs   | +0.03%  | FM\$ | \$752 |
| Fett    | +85 Lbs   | +0.10%  | GM\$ | \$758 |

### Mjolkhastighet 103

Baserat på 0 Döttrar i 0 Bes. (100% US Döttrar)

Mjolk - US Döttr.

Fettavkastning US Döttr.

Proteinavkastning - US Döttr.

### HÄLSOEGENSKAPER

|                |       |                   |        |
|----------------|-------|-------------------|--------|
| Livslängd      | +2.6  | Dotterfertilitet  | -2.1   |
| Kofertilitet   | -1.4  | Kvigtferilitet    | 1.1    |
| Cow Livability | +1.2  | Heifer Livability | +0.5   |
| Celltal        | +2.90 | MAST              | 0.2%   |
| METR           | 2.3%  | KETO              | 2.2%   |
| DA             | 1.0%  | RETP              | 0.4%   |
| Feed Saved     | 162   | MFEV              | +0.1%  |
| Zoetis DWP\$   | \$682 | Zoetis WT\$       | \$-133 |
| Zoetis CW\$    | \$-1  |                   |        |

### KALVNINGSEGENSKAPER

|                         |      |         |                 |      |         |
|-------------------------|------|---------|-----------------|------|---------|
| Kalvningsegenskaper Far | 2.2% | 63% Rel | Far Dödsfödslar | 5.9% | 60% Rel |
| Kalvningsegenskaper Dtr | 2.2% | 61% Rel | MF Dödsfödslar  | 5.4% | 59% Rel |

Kodnr: 9-8714 • Stbnr: 93641 • Pris: 330 kr.  
511, 450 kr/dos.



## AltaENDYMION

011H016101

PEAK ALTAENDYMION-ET

AltaWHEELHOUSE X AltaZAZZLE X POSITIVE

H0840M003235932957 | DOB 2021-08-16

Kappa-Casein BB | Beta-Casein A1A2

Haplotyper HH1F HH2F HH3F HH4F HH5F HCDF HH6F

Genetiska koder TC TD TL TV TY

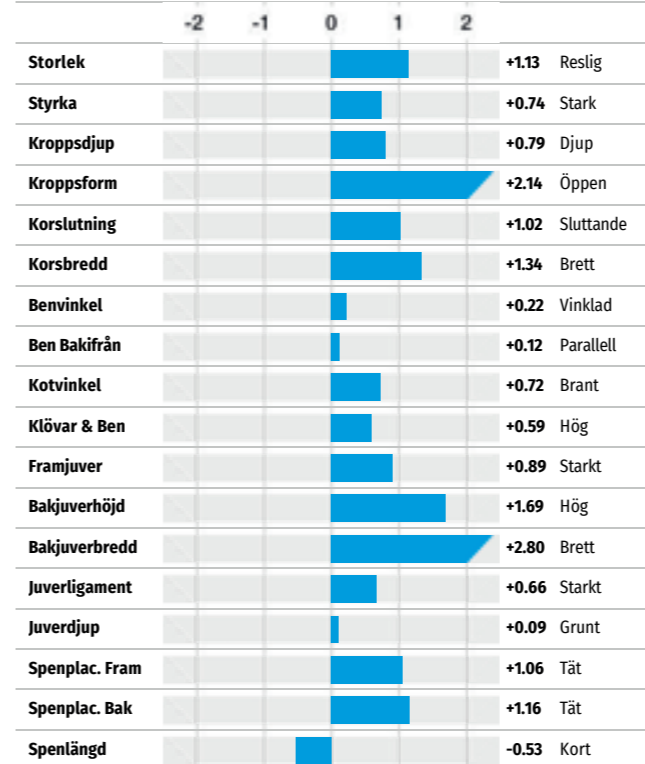
aAa 243 | EFI 10.5 % | RHA 99%

Nuvarande test USA-202212

CDCB & HA-USA Genetic Evaluations 12/2022

HELHET Baserat på 0 Döttrar i 0 Bes. (76% Rel)

|     |      |       |      |
|-----|------|-------|------|
| TYP | 1.12 | Juvel | 1.12 |
| BWC | 0.08 | Ben   | 0.28 |



### STAMTAVLA

|      |                     |
|------|---------------------|
| Far  | PEAK WHEELHOUSE-ET  |
| DAM  | PEAK LOLA-ET        |
| MGS  | PEAK ALTAZAZZLE-ET  |
| MGD  | PEAK LUNAR-ET       |
| MGGG | PROGENESIS POSITIVE |
| MGGD | PEAK LAUREATE-ET    |

- Mjolk CFP 177
- Exteriör tjur
- Kvigtjur

Genomisk

NY TJUR

TPI **2990** NM\$ **1033**



### PRODUKTION

|         |           |         |      |        |
|---------|-----------|---------|------|--------|
| Mjolk   | +1829 Lbs | 79% Rel | CM\$ | \$1045 |
| Protein | +69 Lbs   | +0.04%  | FM\$ | \$961  |
| Fett    | +108 Lbs  | +0.13%  | GM\$ | \$961  |

### Mjolkhastighet 100

Baserat på 0 Döttrar i 0 Bes. (100% US Döttrar)

Mjolk - US Döttr.

Fettavkastning US Döttr.

Proteinavkastning - US Döttr.

### HÄLSOEGENSKAPER

|                |        |                   |       |
|----------------|--------|-------------------|-------|
| Livslängd      | +4.8   | Dotterfertilitet  | -1.4  |
| Kofertilitet   | -0.6   | Kvigtferilitet    | 0.2   |
| Cow Livability | +1.4   | Heifer Livability | +0.7  |
| Celltal        | +2.81  | MAST              | 1.6%  |
| METR           | 1.8%   | KETO              | 1.3%  |
| DA             | 0.6%   | RETP              | 0.5%  |
| Feed Saved     | 60     | MFEV              | -0.1% |
| Zoetis DWP\$   | \$1013 | Zoetis WT\$       | \$-13 |
| Zoetis CW\$    | \$-47  |                   |       |

### KALVNINGSEGENSKAPER

|                         |      |         |                 |      |         |
|-------------------------|------|---------|-----------------|------|---------|
| Kalvningsegenskaper Far | 2.0% | 62% Rel | Far Dödsfödslar | 6.3% | 59% Rel |
| Kalvningsegenskaper Dtr | 1.6% | 56% Rel | MF Dödsfödslar  | 4.7% | 54% Rel |

Kodnr: 9-8715 • Stbnr: 93642 • Pris: 315 kr.  
511, 450 kr/dos.

Genomisk

NY TJUR



## AltaSTARSKY

011H016058

PEAK ALTASTARSKY-ET

AltaHAILED X PURSUIT X AltaTOPSHOT

HO840M003229908061 | DOB 2021-03-22

Kappa-Casein AB | Beta-Casein A2A2

Haplotyper HH1F HH2F HH3F HH4F HH5F HCDF HH6F

Genetiska koder TC TD TL TV TY

aAa 324 | DMS 561,561 | EFI 10.5 % | RHA 99%

Nuvarande test USA-202212

CDCB & HA-USA Genetic Evaluations 12/2022

### HELHET Baserat på 0 Döttrar i 0 Bes. (77% Rel)

|     |      |       |      |
|-----|------|-------|------|
| TYP | 1.45 | Juvar | 1.55 |
| BWC | 0.39 | Ben   | 0.36 |

|                | -2 | -1 | 0 | 1 | 2 |                 |
|----------------|----|----|---|---|---|-----------------|
| Storlek        |    |    |   |   |   | +1.45 Reslig    |
| Styrka         |    |    |   |   |   | +0.70 Stark     |
| Kroppsdjup     |    |    |   |   |   | +0.67 Djup      |
| Kroppform      |    |    |   |   |   | +1.62 Öppen     |
| Korslutning    |    |    |   |   |   | -0.07 Hög       |
| Korsbredd      |    |    |   |   |   | +1.51 Brett     |
| Benvinkel      |    |    |   |   |   | +0.88 Vinklad   |
| Ben Bakifrån   |    |    |   |   |   | +0.42 Parallell |
| Kotvinkel      |    |    |   |   |   | +0.47 Brant     |
| Klövar & Ben   |    |    |   |   |   | +0.74 Hög       |
| Framjuvar      |    |    |   |   |   | +1.31 Starkt    |
| Bakjuverhöjd   |    |    |   |   |   | +2.28 Hög       |
| Bakjuverbredd  |    |    |   |   |   | +2.66 Brett     |
| Juveligament   |    |    |   |   |   | +1.46 Starkt    |
| Juvelrdjup     |    |    |   |   |   | +0.93 Grunt     |
| Spennlac. Fram |    |    |   |   |   | +1.18 Tät       |
| Spennlac. Bak  |    |    |   |   |   | +1.73 Tät       |
| Spennlängd     |    |    |   |   |   | -0.04 Kort      |

### STAMTAVLA

|      |                      |
|------|----------------------|
| Far  | MATCREST HAILED-ET   |
| DAM  | PEAK ZELDA-ET        |
| MGS  | PINE-TREE-I PURSUIT  |
| MGD  | PEAK ZENITH-ET       |
| MGGS | BOMAZ ALTATOPSHOT-ET |
| MGGD | BRU-DALE ZERONICA-ET |

- Allround
- Kvig

|     |      |      |     |
|-----|------|------|-----|
| TPI | 2916 | NM\$ | 882 |
|-----|------|------|-----|



### PRODUKTION

|         |           |         |      |       |
|---------|-----------|---------|------|-------|
| Mjök    | +1122 Lbs | 79% Rel | CM\$ | \$899 |
| Protein | +61 Lbs   | +0.09%  | FM\$ | \$753 |
| Fett    | +97 Lbs   | +0.18%  | GM\$ | \$838 |

### Mjök hastighet 102

Baserat på 0 Döttrar i 0 Bes. (100% US Döttrar)

Mjök - US Döttr.

Fettavkastning US Döttr.

Proteinavkastning - US Döttr.

### HÄLSOEGENSKAPER

|                |       |                   |       |
|----------------|-------|-------------------|-------|
| Livslängd      | +3.4  | Dotterfertilitet  | -1.0  |
| Kofertilitet   | -0.9  | Kvigfertilitet    | 1.0   |
| Cow Livability | +0.3  | Heifer Livability | +0.9  |
| Celltal        | +2.94 | MAST              | 2.5%  |
| METR           | 2.3%  | KETO              | 2.1%  |
| DA             | 0.4%  | RETP              | 0.1%  |
| Feed Saved     | -16   | MFEV              | +0.1% |
| Zoetis DWP\$   | \$948 | Zoetis WT\$       | \$83  |
| Zoetis CW\$    | \$-32 |                   |       |

### KALVNINGSEGENSKAPER

|                         |      |         |                 |      |         |
|-------------------------|------|---------|-----------------|------|---------|
| Kalvningsegenskaper Far | 1.7% | 62% Rel | Far Dödsfödslar | 6.1% | 58% Rel |
| Kalvningsegenskaper Dtr | 1.5% | 56% Rel | MF Dödsfödslar  | 3.9% | 54% Rel |

Kodnr: 9-8716 • Stbnr: 93643 • Pris: 330 kr.  
511, 450 kr/dos.

Genomisk

NY TJUR



## AltaBARBAZZA

011H016074

PEAK ALTABARBAZZA-ET

AltaHAILED X PURSUIT X AltaROBSON

HO840M003224956190 | DOB 2021-02-23

Kappa-Casein AB | Beta-Casein A1A2

Haplotyper HH1F HH2F HH3F HH4F HH5F HCDF HH6F

Genetiska koder TC TD TL TR TV TY

aAa 243 | DMS 561,456 | EFI 10.6 % | RHA 99%

Nuvarande test USA-202212

CDCB & HA-USA Genetic Evaluations 12/2022

### HELHET Baserat på 0 Döttrar i 0 Bes. (77% Rel)

|     |       |       |      |
|-----|-------|-------|------|
| TYP | 1.35  | Juvar | 1.58 |
| BWC | -0.29 | Ben   | 0.28 |

|                | -2 | -1 | 0 | 1 | 2 |                 |
|----------------|----|----|---|---|---|-----------------|
| Storlek        |    |    |   |   |   | +0.71 Reslig    |
| Styrka         |    |    |   |   |   | +0.08 Stark     |
| Kroppsdjup     |    |    |   |   |   | +0.02 Djup      |
| Kroppform      |    |    |   |   |   | +1.36 Öppen     |
| Korslutning    |    |    |   |   |   | -1.35 Hög       |
| Korsbredd      |    |    |   |   |   | +0.75 Brett     |
| Benvinkel      |    |    |   |   |   | +1.07 Vinklad   |
| Ben Bakifrån   |    |    |   |   |   | +0.26 Parallell |
| Kotvinkel      |    |    |   |   |   | +0.30 Brant     |
| Klövar & Ben   |    |    |   |   |   | +0.50 Hög       |
| Framjuvar      |    |    |   |   |   | +1.70 Starkt    |
| Bakjuverhöjd   |    |    |   |   |   | +2.23 Hög       |
| Bakjuverbredd  |    |    |   |   |   | +2.38 Brett     |
| Juveligament   |    |    |   |   |   | +0.55 Starkt    |
| Juvelrdjup     |    |    |   |   |   | +1.09 Grunt     |
| Spennlac. Fram |    |    |   |   |   | +0.43 Tät       |
| Spennlac. Bak  |    |    |   |   |   | +0.60 Tät       |
| Spennlängd     |    |    |   |   |   | +0.75 Lång      |

### STAMTAVLA

|      |                     |
|------|---------------------|
| Far  | MATCREST HAILED-ET  |
| DAM  | PEAK ENCHANT-ET     |
| MGS  | PINE-TREE-I PURSUIT |
| MGD  | PEAK ELEVATE-ET     |
| MGGS | BOMAZ ALTAROBSON-ET |
| MGGD | ENDCO EXACTA-ET     |

- Allround
- Kvig
- Robot

|     |      |      |     |
|-----|------|------|-----|
| TPI | 2917 | NM\$ | 904 |
|-----|------|------|-----|



### PRODUKTION

|         |           |         |      |       |
|---------|-----------|---------|------|-------|
| Mjök    | +1300 Lbs | 79% Rel | CM\$ | \$919 |
| Protein | +61 Lbs   | +0.07%  | FM\$ | \$795 |
| Fett    | +79 Lbs   | +0.10%  | GM\$ | \$884 |

### Mjök hastighet 102

Baserat på 0 Döttrar i 0 Bes. (100% US Döttrar)

Mjök - US Döttr.

Fettavkastning US Döttr.

Proteinavkastning - US Döttr.

### HÄLSOEGENSKAPER

|                |        |                   |       |
|----------------|--------|-------------------|-------|
| Livslängd      | +4.3   | Dotterfertilitet  | -0.1  |
| Kofertilitet   | 1.2    | Kvigfertilitet    | 3.4   |
| Cow Livability | -0.6   | Heifer Livability | +1.0  |
| Celltal        | +2.82  | MAST              | 4.2%  |
| METR           | 1.1%   | KETO              | 1.8%  |
| DA             | 0.5%   | RETP              | -0.3% |
| Feed Saved     | 129    | MFEV              | -0.1% |
| Zoetis DWP\$   | \$1002 | Zoetis WT\$       | \$138 |
| Zoetis CW\$    | \$-1   |                   |       |

### KALVNINGSEGENSKAPER

|                         |      |         |                 |      |         |
|-------------------------|------|---------|-----------------|------|---------|
| Kalvningsegenskaper Far | 2.1% | 62% Rel | Far Dödsfödslar | 6.2% | 58% Rel |
| Kalvningsegenskaper Dtr | 1.5% | 57% Rel | MF Dödsfödslar  | 3.8% | 54% Rel |



Kodnr: 9-8713 • Stbnr: 93640 • Pris: 320 kr.  
511, 440 kr/dos.

Genomisk



## AltaMOSTWANTED

011H016134

PEAK ALTAMOSTWANTED-ET

AltaWHEELHOUSE X POSITIVE X MEDLEY

HO840M003224956338 | DOB 03/04/2021

Kappa-Casein AB | Beta-Casein A2A2

Haplotyper HH1F HH2F HH3F HH4F HH5F HCDF HH6F

Genetiska koder TC TD TL TR TV TY

aAa 354 | DMS 345,135 | EFI 11.0% | RHA 99%

Nuvarande test USA-202212

CDCB & HA-USA Genetic Evaluations 12/2022

HELHET Baserat på 0 Döttrar i 0 Bes. (77% Rel)

|     |      |       |      |
|-----|------|-------|------|
| TYP | 1.47 | Juvel | 1.83 |
| BWC | 1.49 | Ben   | 0.55 |

|                | -2 | -1 | 0 | 1 | 2 |                 |
|----------------|----|----|---|---|---|-----------------|
| Storlek        |    |    |   |   |   | +1.47 Reslig    |
| Styrka         |    |    |   |   |   | +1.55 Stark     |
| Kroppsdjup     |    |    |   |   |   | +1.04 Djup      |
| Kroppform      |    |    |   |   |   | +0.69 Öppen     |
| Korslutning    |    |    |   |   |   | +1.19 Sluttande |
| Korsbredd      |    |    |   |   |   | +1.63 Brett     |
| Benvinkel      |    |    |   |   |   | -1.12 Rak       |
| Ben Bakifrån   |    |    |   |   |   | +0.85 Parallell |
| Kotvinkel      |    |    |   |   |   | +1.37 Brant     |
| Klövar & Ben   |    |    |   |   |   | +0.81 Högt      |
| Framjuvel      |    |    |   |   |   | +2.55 Starkt    |
| Bakjuvelhöjd   |    |    |   |   |   | +1.93 Högt      |
| Bakjuvelbredd  |    |    |   |   |   | +2.88 Brett     |
| Juveligament   |    |    |   |   |   | +0.70 Starkt    |
| Juvelrdjup     |    |    |   |   |   | +1.93 Grunt     |
| Spennlac. Fram |    |    |   |   |   | +1.26 Tät       |
| Spennlac. Bak  |    |    |   |   |   | +1.14 Tät       |
| Spennlängd     |    |    |   |   |   | -1.19 Kort      |

### STAMTAVLA

|      |                           |
|------|---------------------------|
| Far  | PEAK WHEELHOUSE-ET        |
| DAM  | PEAK MARACA-ET            |
| MGS  | PROGENESIS POSITIVE       |
| MGD  | PINE-TREE MANDOLIN-ET     |
| MGGS | ABS MEDLEY-ET             |
| MGGD | SEAGULL-BAY MY OCTAVIA-ET |

- Styrka
- Kvig
- Robot

TPI **2959** NM\$ **894**



### PRODUKTION

|         |           |         |      |       |
|---------|-----------|---------|------|-------|
| Mjolk   | +1481 Lbs | 79% Rel | CM\$ | \$905 |
| Protein | +61 Lbs   | +0.05%  | FM\$ | \$813 |
| Fett    | +101 Lbs  | +0.15%  | GM\$ | \$817 |

### Mjolkhastighet 103

Baserat på 0 Döttrar i 0 Bes. (100% US Döttrar)

Mjolk - US Döttr.

Fettavkastning US Döttr.

Proteinavkastning - US Döttr.

### HÄLSOEGENSKAPER

|                |       |                   |      |
|----------------|-------|-------------------|------|
| Livslängd      | +4.6  | Dotterfertilitet  | -0.9 |
| Kofertilitet   | -0.9  | Kvigfertilitet    | 1.0  |
| Cow Livability | +1.2  | Heifer Livability | 0.0  |
| Celltal        | +2.88 | MAST              | 1.4% |
| METR           | 1.0%  | KETO              | 1.5% |
| DA             | 0.7%  | RETP              | 0.1% |
| Feed Saved     | -181  | MFEV              | 0.0% |
| Zoetis DWP\$   | \$869 | Zoetis WT\$       | \$46 |
| Zoetis CW\$    | \$-57 |                   |      |

### KALVNINGSEGENSKAPER

|                         |      |         |                 |      |         |
|-------------------------|------|---------|-----------------|------|---------|
| Kalvningsegenskaper Far | 2.1% | 63% Rel | Far Dödsfödslar | 6.0% | 60% Rel |
| Kalvningsegenskaper Dtr | 1.9% | 57% Rel | MF Dödsfödslar  | 5.0% | 55% Rel |

Kodnr: 9-8670 • Stbnr: 93636 • Pris: 285 kr.  
511, 430 kr/dos.

Genomisk



## AltaCOUNTDOWN-PP

011H016105

TTM ALTACOUNTDOWN-PP-ET

EDGE-P X CRIMSON X CHARLEY

HO840M003220448663 | DOB 1/31/2021

Kappa-Casein AB | Beta-Casein A2A2

Haplotyper HH1F HH2F HH3F HH4F HH5F HCDF HH6F

Genetiska koder PP TC TD TL TV TY

aAa 162 | DMS 345,135 | EFI 10.7% | RHA 99%

Nuvarande test USA-202212

CDCB & HA-USA Genetic Evaluations 12/2022

HELHET Baserat på 0 Döttrar i 0 Bes. (79% Rel)

|     |       |       |       |
|-----|-------|-------|-------|
| TYP | 0.06  | Juvel | 0.30  |
| BWC | -0.02 | Ben   | -0.95 |

|                | -2 | -1 | 0 | 1 | 2 |                 |
|----------------|----|----|---|---|---|-----------------|
| Storlek        |    |    |   |   |   | +0.78 Reslig    |
| Styrka         |    |    |   |   |   | +0.11 Stark     |
| Kroppsdjup     |    |    |   |   |   | +0.34 Djup      |
| Kroppform      |    |    |   |   |   | +0.77 Öppen     |
| Korslutning    |    |    |   |   |   | +1.93 Sluttande |
| Korsbredd      |    |    |   |   |   | +0.34 Brett     |
| Benvinkel      |    |    |   |   |   | +0.05 Vinklad   |
| Ben Bakifrån   |    |    |   |   |   | -0.91 Vinklad   |
| Kotvinkel      |    |    |   |   |   | -0.04 Låg       |
| Klövar & Ben   |    |    |   |   |   | -0.70 Låg       |
| Framjuvel      |    |    |   |   |   | +0.31 Starkt    |
| Bakjuvelhöjd   |    |    |   |   |   | +0.22 Högt      |
| Bakjuvelbredd  |    |    |   |   |   | +0.79 Brett     |
| Juveligament   |    |    |   |   |   | +0.22 Starkt    |
| Juvelrdjup     |    |    |   |   |   | +0.69 Grunt     |
| Spennlac. Fram |    |    |   |   |   | -0.32 Vinklad   |
| Spennlac. Bak  |    |    |   |   |   | +0.39 Tät       |
| Spennlängd     |    |    |   |   |   | -0.03 Kort      |

### STAMTAVLA

|      |                           |
|------|---------------------------|
| Far  | WINSTAR EDGE-P-ET         |
| DAM  | TTM CRIMSON ENOUGH        |
| MGS  | ABS CRIMSON-ET            |
| MGD  | TTM CHARLEY EXQUISITE-ET  |
| MGGS | DG CHARLEY ET TL TV TY CF |
| MGGD | TTM JOSUPER ECSTATIC      |

- -PP • Robot
- Kvigjur
- aAa 162

TPI **2687** NM\$ **835**



### PRODUKTION

|         |          |         |      |       |
|---------|----------|---------|------|-------|
| Mjolk   | +375 Lbs | 80% Rel | CM\$ | \$856 |
| Protein | +43 Lbs  | +0.11%  | FM\$ | \$681 |
| Fett    | +97 Lbs  | +0.29%  | GM\$ | \$787 |

### Mjolkhastighet 101

Baserat på 0 Döttrar i 0 Bes. (100% US Döttrar)

Mjolk - US Döttr.

Fettavkastning US Döttr.

Proteinavkastning - US Döttr.

### HÄLSOEGENSKAPER

|                |       |                   |      |
|----------------|-------|-------------------|------|
| Livslängd      | +3.6  | Dotterfertilitet  | -1.0 |
| Kofertilitet   | 0.5   | Kvigfertilitet    | -0.3 |
| Cow Livability | +2.5  | Heifer Livability | +0.7 |
| Celltal        | +2.82 | MAST              | 1.1% |
| METR           | 0.9%  | KETO              | 1.5% |
| DA             | 0.4%  | RETP              | 0.1% |
| Feed Saved     | 100   | MFEV              | 0.0% |
| Zoetis DWP\$   | \$820 | Zoetis WT\$       | \$-2 |
| Zoetis CW\$    | \$-38 |                   |      |

### KALVNINGSEGENSKAPER

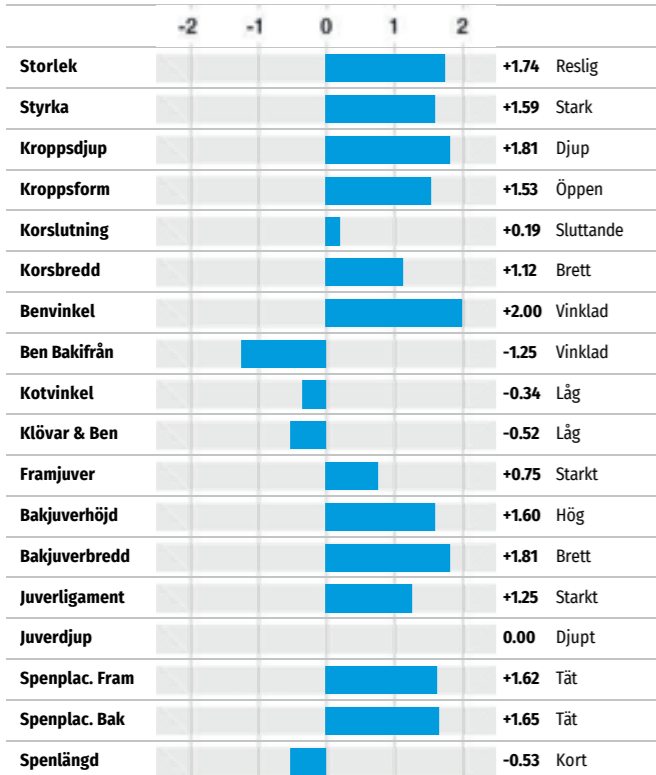
|                         |      |         |                 |      |         |
|-------------------------|------|---------|-----------------|------|---------|
| Kalvningsegenskaper Far | 2.1% | 62% Rel | Far Dödsfödslar | 5.6% | 58% Rel |
| Kalvningsegenskaper Dtr | 1.7% | 60% Rel | MF Dödsfödslar  | 3.0% | 58% Rel |

Kodnr: 9-7975 • Stbnr: 92912 • Pris: 385 kr.  
511, 540 kr/dos.



**HELHET** Baserat på 228 Döttrar i 58 Bes. (96% Rel)

|     |      |       |       |
|-----|------|-------|-------|
| TYP | 1.39 | Juvel | 0.77  |
| BWC | 1.16 | Ben   | -1.20 |



**STAMTAVLA**

|      |                            |
|------|----------------------------|
| Far  | AOT SILVER HELIX-ET        |
| DAM  | COOKIECUTTER HATTIE-ET     |
| MGS  | BACON-HILL MONTROSS-ET     |
| MGD  | COOKIECUTTER EPIC HAZEL-ET |
| MGGS | GENERATIONS EPIC           |
| MGGD | COOKIECUTTER MOM HALO-ET   |

**AltaGOPRO**

011H012124

PEAK ALTAGOPRO-ET

HELIX X MONTROSS X EPIC

HO840M003139733266 | DOB 2/7/2017

Kappa-Casein AB | Beta-Casein A2A2

Haplotyper HH1F HH2F HH3F HH4F HH5F HCD F HH6F

Genetiska koder TC TD TL TP TR TV TY

aAa 423 | DMS 345,234 | EFI 11.0 % | RHA 100%

Nuvarande test USA-202212

CDCB & HA-USA Genetic Evaluations 12/2022

|     |      |      |     |
|-----|------|------|-----|
| TPI | 2792 | NM\$ | 823 |
|-----|------|------|-----|



**PRODUKTION**

|         |           |         |      |       |
|---------|-----------|---------|------|-------|
| Mjolk   | +2914 Lbs | 99% Rel | CM\$ | \$821 |
| Protein | +79 Lbs   | -0.04%  | FM\$ | \$857 |
| Fett    | +84 Lbs   | -0.09%  | GM\$ | \$764 |

**Mjolkhastighet 101**

Baserat på 1267 Döttrar i 179 Bes. (87% US Döttrar)

|                               |            |      |
|-------------------------------|------------|------|
| Mjolk - US Döttr.             | +32029 Lbs | 87%  |
| Fettavkastning US Döttr.      | +1252 Lbs  | 3.9% |
| Proteinavkastning - US Döttr. | +997 Lbs   | 3.1% |

**HÄLSOEGENSKAPER**

|                |       |                   |       |
|----------------|-------|-------------------|-------|
| Livslängd      | +2.6  | Dotterfertilitet  | -1.9  |
| Kofertilitet   | -1.9  | Kvigfertilitet    | -0.3  |
| Cow Livability | -1.8  | Heifer Livability | +1.3  |
| Celltal        | +2.83 | MAST              | 0.4%  |
| METR           | 1.8%  | KETO              | 1.2%  |
| DA             | 0.3%  | RETP              | 0.1%  |
| Feed Saved     | -33   | MFEV              | +0.1% |
| Zoetis DWP\$   | \$964 | Zoetis WT\$       | \$53  |
| Zoetis CW\$    | \$0   |                   |       |

**KALVNINGSEGENSKAPER**

|                         |      |         |                 |      |         |
|-------------------------|------|---------|-----------------|------|---------|
| Kalvningsegenskaper Far | 2.1% | 99% Rel | Far Dödsfödslar | 5.1% | 97% Rel |
| Kalvningsegenskaper Dtr | 1.7% | 92% Rel | MF Dödsfödslar  | 4.5% | 92% Rel |

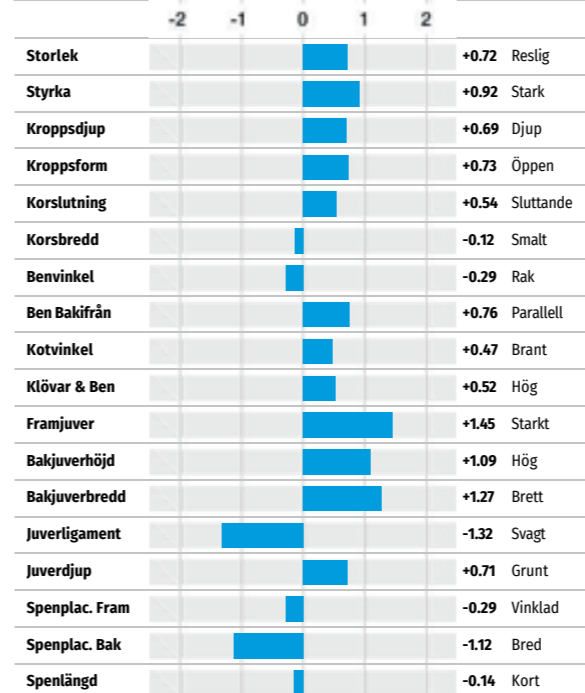
- Prövad
- Mjolk
- Kvigtjur

Kodnr: 9-7801 • Stbnr: 92612 • Pris: 310 kr.  
511, 440 kr/dos.



**HELHET** Baserat på 940 Döttrar i 178 Bes. (95% Rel)

|     |      |       |      |
|-----|------|-------|------|
| TYP | 0.99 | Juvel | 0.63 |
| BWC | 0.52 | Ben   | 0.45 |



**STAMTAVLA**

|      |                            |
|------|----------------------------|
| Far  | BACON-HILL PETY MODESTY-ET |
| DAM  | OCD MOHAWK 2328-ET         |
| MGS  | BACON-HILL O MOHAWK-ET     |
| MGD  | OCD ROBUST SHIMMER-ET      |
| MGGS | ROYLANE SOCRA ROBUST-ET    |
| MGGD | AMMON-PEACHEY SHANA-ET     |



Cristella Swag 445 VG87  
Cristella Holsteins; Cremona, Italy



Dam: OCD Mohawk 2328-ET



MGD: OCD Robust Shimmer-ET

- Höga halter
- Robot
- Kvigtjur

**AltaSWAG**

011H011963

OCD ALTASWAG-ET

MODESTY X MOHAWK X ROBUST

HO840M003136264642 | DOB 4/18/2016

Kappa-Casein AE | Beta-Casein A1A2

Haplotyper HH1F HH2F HH3F HH4F HH5F HCD F HH6F

Genetiska koder TC TD TL TP TR TV TY

aAa 324 | DMS 345,234 | EFI 10.6 % | RHA 100%

Nuvarande test USA-202212

CDCB & HA-USA Genetic Evaluations 12/2022

|     |      |      |     |
|-----|------|------|-----|
| TPI | 2725 | NM\$ | 696 |
|-----|------|------|-----|



**PRODUKTION**

|         |           |         |      |       |
|---------|-----------|---------|------|-------|
| Mjolk   | +1160 Lbs | 99% Rel | CM\$ | \$705 |
| Protein | +53 Lbs   | +0.06%  | FM\$ | \$612 |
| Fett    | +98 Lbs   | +0.18%  | GM\$ | \$686 |

**Mjolkhastighet 103**

Baserat på 4594 Döttrar i 604 Bes. (46% US Döttrar)

|                               |            |      |
|-------------------------------|------------|------|
| Mjolk - US Döttr.             | +28993 Lbs | 46%  |
| Fettavkastning US Döttr.      | +1225 Lbs  | 4.2% |
| Proteinavkastning - US Döttr. | +947 Lbs   | 3.3% |

**HÄLSOEGENSKAPER**

|                |       |                   |       |
|----------------|-------|-------------------|-------|
| Livslängd      | +0.8  | Dotterfertilitet  | -1.1  |
| Kofertilitet   | -0.8  | Kvigfertilitet    | 0.8   |
| Cow Livability | -0.4  | Heifer Livability | +0.4  |
| Celltal        | +3.05 | MAST              | -1.1% |
| METR           | 1.7%  | KETO              | 1.5%  |
| DA             | 0.0%  | RETP              | -0.1% |
| Feed Saved     | -70   | MFEV              | 0.0%  |
| Zoetis DWP\$   | \$772 | Zoetis WT\$       | \$-22 |
| Zoetis CW\$    | \$-18 |                   |       |

**KALVNINGSEGENSKAPER**

|                         |      |         |                 |      |         |
|-------------------------|------|---------|-----------------|------|---------|
| Kalvningsegenskaper Far | 1.9% | 98% Rel | Far Dödsfödslar | 5.1% | 95% Rel |
| Kalvningsegenskaper Dtr | 1.6% | 95% Rel | MF Dödsfödslar  | 4.1% | 95% Rel |



Kodnr: 9-7628 • Stbnr: 92304 • Pris: 311 kr.  
511, 430 kr/dos.



### AltaAMULET

011H011725

PEAK ALTAAMULET-ET

JOSUPER X MOGUL X FREDDIE

HO840M003129205459 | DOB 4/8/2015

Kappa-Casein AA | Beta-Casein A2A2

Haplotyper HH1F HH2F HH3F HH4F HH5F HCDF HH6F

Genetiska koder TC TD TL TP TR TV TY

aAa 342 | DMS 345,135 | EFI 10.0 % | RHA 99%

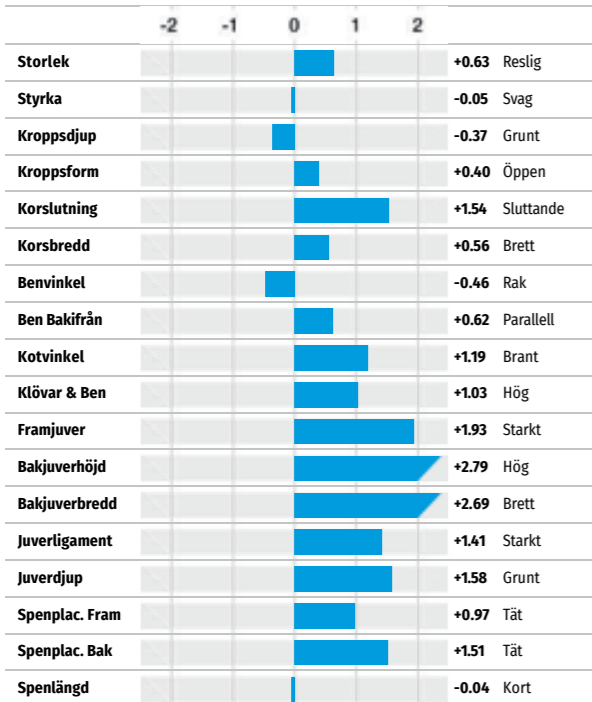
Nuvarande test USA-202212

CDCB & HA-USA Genetic Evaluations 12/2022

- Mjölök
- Juver
- Medelstorlek

#### HELHET Baserat på 3308 Döttrar i 677 Bes. (97% Rel)

|     |       |       |      |
|-----|-------|-------|------|
| TYP | 1.36  | Juver | 2.14 |
| BWC | -0.01 | Ben   | 0.88 |



#### STAMTAVLA

|      |                             |
|------|-----------------------------|
| Far  | UECKER SUPERSIRE JOSUPER-ET |
| DAM  | OCD MOGUL ABRACADABRA-ET    |
| MGS  | MOUNTFIELD SSI DCY MOGUL-ET |
| MGD  | VISION-GEN SH FRD A12276-ET |
| MGGS | BADGER-BLUFF FANNY FREDDIE  |
| MGGD | APLOUIS JET STREAM ALDA-ET  |



Cristella AMULET Nerola  
All. Balestreri Donatella (CR); Italy



Bomaz Amulet 7791  
Bomaz Farms; Hammond, WI



Pine Breeze Amulet 9639  
Pine Breeze Dairy LLC; Pine River, WI

TPI **2581** NM\$ **546**



#### PRODUKTION

|         |           |         |      |       |
|---------|-----------|---------|------|-------|
| Mjölök  | +1667 Lbs | 99% Rel | CM\$ | \$548 |
| Protein | +50 Lbs   | -0.01%  | FM\$ | \$542 |
| Fett    | +42 Lbs   | -0.07%  | GM\$ | \$431 |

#### Mjölkhastighet 101

Baserat på 10190 Döttrar i 1495 Bes. (31% US Döttrar)

|                               |            |      |
|-------------------------------|------------|------|
| Mjölök - US Döttr.            | +30062 Lbs | 31%  |
| Fettavkastning US Döttr.      | +1165 Lbs  | 3.9% |
| Proteinavkastning - US Döttr. | +943 Lbs   | 3.1% |

#### HÄLSOEGENSKAPER

|                |       |                   |       |
|----------------|-------|-------------------|-------|
| Livslängd      | +3.1  | Dotterfertilitet  | -3.6  |
| Kofertilitet   | -2.2  | Kvigfertilitet    | 2.6   |
| Cow Livability | -0.4  | Heifer Livability | +1.2  |
| Celltal        | +2.88 | MAST              | 2.5%  |
| METR           | 1.2%  | KETO              | 1.9%  |
| DA             | 0.8%  | RETP              | 0.0%  |
| Feed Saved     | -26   | MFEV              | 0.0%  |
| Zoetis DWP\$   | \$523 | Zoetis WT\$       | \$-11 |
| Zoetis CW\$    | \$-10 |                   |       |

#### KALVNINGSEGENSKAPER

|                         |      |         |                 |      |         |
|-------------------------|------|---------|-----------------|------|---------|
| Kalvningsegenskaper Far | 2.5% | 99% Rel | Far Dödsfödslar | 6.7% | 98% Rel |
| Kalvningsegenskaper Dtr | 2.4% | 96% Rel | MF Dödsfödslar  | 5.6% | 96% Rel |

Kodnr: 9-7974 • Stbnr: 92911 • Pris: 240 kr.



### AltaOSCAR

011H012060

PEAK ALTAOSCAR-ET

AltaKERMIT X YODER X LEXOR

HO840M003138498720 | DOB 11/11/2016

Kappa-Casein AB | Beta-Casein A2A2

Haplotyper HH1F HH2F HH3F HH4F HH5F HCDF HH6F

Genetiska koder TC TD TL TP TR TV TY

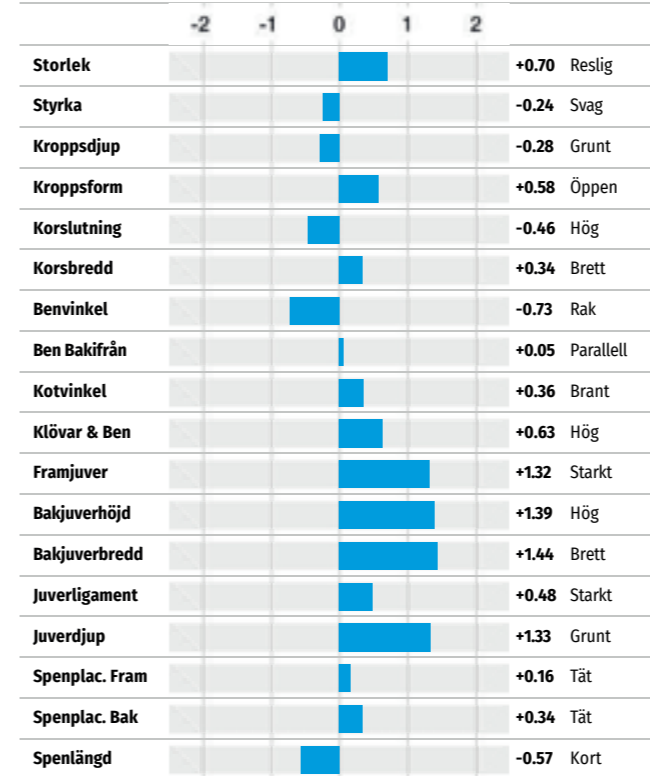
aAa 234 | DMS 561,126 | EFI 10.3 % | RHA 99%

Nuvarande test USA-202212

CDCB & HA-USA Genetic Evaluations 12/2022

#### HELHET Baserat på 315 Döttrar i 71 Bes. (92% Rel)

|     |       |       |      |
|-----|-------|-------|------|
| TYP | 0.93  | Juver | 1.12 |
| BWC | -0.25 | Ben   | 0.36 |



#### STAMTAVLA

|      |                             |
|------|-----------------------------|
| Far  | PEAK ALTAKERMIT-ET          |
| DAM  | CLEAR-ECHO OVATION-ET       |
| MGS  | WOODCREST MOGUL YODER-ET    |
| MGD  | CLEAR-ECHO LEXOR 2788-ET    |
| MGGS | GENERATIONS LEXOR           |
| MGGD | CLEAR-ECHO OBSERVER 2280-ET |

- Medelstorlek
- + Dotterfert
- Kvigtjur

TPI **2456** NM\$ **382**



#### PRODUKTION

|         |           |         |      |       |
|---------|-----------|---------|------|-------|
| Mjölök  | +1313 Lbs | 96% Rel | CM\$ | \$375 |
| Protein | +21 Lbs   | -0.07%  | FM\$ | \$463 |
| Fett    | +17 Lbs   | -0.11%  | GM\$ | \$438 |

#### Mjölkhastighet 107

Baserat på 1018 Döttrar i 218 Bes. (18% US Döttrar)

|                               |            |      |
|-------------------------------|------------|------|
| Mjölök - US Döttr.            | +29085 Lbs | 18%  |
| Fettavkastning US Döttr.      | +1123 Lbs  | 3.9% |
| Proteinavkastning - US Döttr. | +884 Lbs   | 3.0% |

#### HÄLSOEGENSKAPER

|                |       |                   |       |
|----------------|-------|-------------------|-------|
| Livslängd      | +2.8  | Dotterfertilitet  | +2.9  |
| Kofertilitet   | 5.4   | Kvigfertilitet    | 3.8   |
| Cow Livability | +1.4  | Heifer Livability | +0.7  |
| Celltal        | +2.85 | MAST              | 3.1%  |
| METR           | 0.7%  | KETO              | 1.2%  |
| DA             | 0.1%  | RETP              | -0.1% |
| Feed Saved     | -62   | MFEV              | 0.0%  |
| Zoetis DWP\$   | \$412 | Zoetis WT\$       | \$151 |
| Zoetis CW\$    | \$-76 |                   |       |

#### KALVNINGSEGENSKAPER

|                         |      |         |                 |      |         |
|-------------------------|------|---------|-----------------|------|---------|
| Kalvningsegenskaper Far | 1.8% | 92% Rel | Far Dödsfödslar | 5.3% | 83% Rel |
| Kalvningsegenskaper Dtr | 1.6% | 87% Rel | MF Dödsfödslar  | 4.9% | 84% Rel |

Kodnr: 9-8666 • Stbnr: 93484 • Pris: 295 kr.  
511, 420 kr/dos.



## AltaINDIGO

011H012328

PEAK ALTAINDIGO-ET

IMAX X DRACO X SUPERSIRE

H0840M003147839890 | DOB 11/21/2017

Kappa-Casein AE | Beta-Casein A1A2

Haplotyper HH1F HH2F HH3F HH4F HH5F HCDF HH6F

Genetiska koder TC TD TL TP TR TV TY

aAa 342 | DMS 345,135 | EFI 11.2 % | RHA 98%

Nuvarande test USA-202212

CDCB & HA-USA Genetic Evaluations 12/2022

|     |             |      |            |
|-----|-------------|------|------------|
| TPI | <b>2796</b> | NM\$ | <b>853</b> |
|-----|-------------|------|------------|



### PRODUKTION

|         |           |         |      |       |
|---------|-----------|---------|------|-------|
| Mjök    | +1662 Lbs | 96% Rel | CM\$ | \$862 |
| Protein | +63 Lbs   | +0.04%  | FM\$ | \$789 |
| Fett    | +94 Lbs   | +0.10%  | GM\$ | \$771 |

### Mjökstastighet 102

|   |  |            |      |
|---|--|------------|------|
| Baserat på 401 Döttrar i 47 Bes. (85% US Döttrar) |  |            |      |
| Mjök - US Döttr.                                  |  | +28992 Lbs | 85%  |
| Fettavkastning US Döttr.                          |  | +1199 Lbs  | 4.1% |
| Proteinavkastning - US Döttr.                     |  | +927 Lbs   | 3.2% |

### HÄLSOEGENSKAPER

|                |       |                   |      |
|----------------|-------|-------------------|------|
| Livslängd      | +3.1  | Dotterfertilitet  | -2.7 |
| Kofertilitet   | -1.8  | Kvigfertilitet    | -0.1 |
| Cow Livability | +1.4  | Heifer Livability | +0.5 |
| Celltal        | +2.93 | MAST              | 0.3% |
| METR           | 1.9%  | KETO              | 1.3% |
| DA             | 0.7%  | RETP              | 0.1% |
| Feed Saved     | 53    | MFEV              | 0.0% |
| Zoetis DWP\$   | \$915 | Zoetis WT\$       | \$35 |
| Zoetis CW\$    | \$-22 |                   |      |

### KALVNINGSEGENSKAPER

|                         |      |         |                 |      |         |
|-------------------------|------|---------|-----------------|------|---------|
| Kalvningsegenskaper Far | 2.0% | 95% Rel | Far Dödsfödslar | 5.6% | 90% Rel |
| Kalvningsegenskaper Dtr | 1.9% | 83% Rel | MF Dödsfödslar  | 4.8% | 84% Rel |

### HELHET Baserat på 58 Döttrar i 14 Bes. (88% Rel)

|     |      |       |       |
|-----|------|-------|-------|
| TYP | 1.04 | Juver | 1.23  |
| BWC | 0.57 | Ben   | -0.03 |

|                | -2 | -1 | 0 | 1 | 2 |                 |
|----------------|----|----|---|---|---|-----------------|
| Storlek        |    |    |   |   |   | +1.23 Reslig    |
| Styrka         |    |    |   |   |   | +0.57 Stark     |
| Kroppsdjup     |    |    |   |   |   | +0.31 Djup      |
| Kroppsform     |    |    |   |   |   | +0.69 Öppen     |
| Korslutning    |    |    |   |   |   | +0.84 Sluttande |
| Korsbredd      |    |    |   |   |   | +1.05 Brett     |
| Benvinkel      |    |    |   |   |   | +0.30 Vinklad   |
| Ben Bakifrån   |    |    |   |   |   | -0.05 Vinklad   |
| Kotvinkel      |    |    |   |   |   | +0.44 Brant     |
| Klövar & Ben   |    |    |   |   |   | +0.31 Hög       |
| Framjuver      |    |    |   |   |   | +1.44 Starkt    |
| Bakjuverhöjd   |    |    |   |   |   | +2.00 Hög       |
| Bakjuverbredd  |    |    |   |   |   | +1.91 Brett     |
| Juveligament   |    |    |   |   |   | +0.08 Starkt    |
| Juvelrdjup     |    |    |   |   |   | +1.21 Grunt     |
| Spennlac. Fram |    |    |   |   |   | +0.21 Tät       |
| Spennlac. Bak  |    |    |   |   |   | +0.57 Tät       |
| Spennlängd     |    |    |   |   |   | +0.58 Lång      |

### STAMTAVLA

|      |                          |
|------|--------------------------|
| Far  | SILVERRIDGE V IMAX       |
| DAM  | G-DERUYTER NOELLE-ET     |
| MGS  | MR COIN DRACO 15006-ET   |
| MGD  | OKDS SUPERSIRE 3406-ET   |
| MGGS | SEAGULL-BAY SUPERSIRE-ET |
| MGGD | OKDS OBSERVER 1356       |

- Mjök
- Robot
- Kvigtjur

Kodnr: 9-8717 • Stbnr: 93644 • Pris: 330 kr.  
511, 460 kr/dos.



## AltaKAMARA-RED

011H016227

KOEPON ALTAKAMARA-RED-ET

RUBELS RED X AltaALTUVE\*RC X SALVATORE RC

HONLDM000577621479 | DOB 2021-07-01

Kappa-Casein BE | Beta-Casein A1A1

Haplotyper HH1F HH2F HH3F HH4F HH5F HCDF HH6F

EFI 11.4 % | RHA 99%

Nuvarande test USA-202212

CDCB & HA-USA Genetic Evaluations 12/2022

|     |             |      |            |
|-----|-------------|------|------------|
| TPI | <b>2779</b> | NM\$ | <b>750</b> |
|-----|-------------|------|------------|



### HELHET Baserat på 0 Döttrar i 0 Bes. (79% Rel)

|     |      |       |      |
|-----|------|-------|------|
| TYP | 1.98 | Juver | 2.12 |
| BWC | 0.28 | Ben   | 0.82 |

|                | -2 | -1 | 0 | 1 | 2 |                 |
|----------------|----|----|---|---|---|-----------------|
| Storlek        |    |    |   |   |   | +1.63 Reslig    |
| Styrka         |    |    |   |   |   | +0.48 Stark     |
| Kroppsdjup     |    |    |   |   |   | +0.67 Djup      |
| Kroppsform     |    |    |   |   |   | +1.62 Öppen     |
| Korslutning    |    |    |   |   |   | +0.16 Sluttande |
| Korsbredd      |    |    |   |   |   | +1.59 Brett     |
| Benvinkel      |    |    |   |   |   | +1.71 Vinklad   |
| Ben Bakifrån   |    |    |   |   |   | +1.27 Parallell |
| Kotvinkel      |    |    |   |   |   | +0.90 Brant     |
| Klövar & Ben   |    |    |   |   |   | +1.14 Hög       |
| Framjuver      |    |    |   |   |   | +2.64 Starkt    |
| Bakjuverhöjd   |    |    |   |   |   | +2.99 Hög       |
| Bakjuverbredd  |    |    |   |   |   | +2.51 Brett     |
| Juveligament   |    |    |   |   |   | +0.50 Starkt    |
| Juvelrdjup     |    |    |   |   |   | +2.31 Grunt     |
| Spennlac. Fram |    |    |   |   |   | +1.44 Tät       |
| Spennlac. Bak  |    |    |   |   |   | +0.44 Tät       |
| Spennlängd     |    |    |   |   |   | -0.37 Kort      |

### STAMTAVLA

|      |                              |
|------|------------------------------|
| Far  | HOOGERHORST DG OH RUBELS-RED |
| DAM  | KOEPON ALTUVE RANGE 5 RED-ET |
| MGS  | PEAK ALTAALTUVE-ET           |
| MGD  | LAKESIDE UPS RED RANGE       |
| MGGS | MR SALVATORE RC-ET           |
| MGGD | DE OOSTERHOF DG ROSE D       |

- Juver
- Kvig
- Låga celler

NY TJUR

### PRODUKTION

|         |           |         |      |       |
|---------|-----------|---------|------|-------|
| Mjök    | +1379 Lbs | 81% Rel | CM\$ | \$756 |
| Protein | +41 Lbs   | -0.01%  | FM\$ | \$742 |
| Fett    | +61 Lbs   | +0.03%  | GM\$ | \$665 |

### Mjökstastighet 90

|   |  |  |  |
|---|--|--|--|
| Baserat på 0 Döttrar i 0 Bes. (100% US Döttrar) |  |  |  |
| Mjök - US Döttr.                                |  |  |  |
| Fettavkastning US Döttr.                        |  |  |  |
| Proteinavkastning - US Döttr.                   |  |  |  |

### HÄLSOEGENSKAPER

|                |       |                   |       |
|----------------|-------|-------------------|-------|
| Livslängd      | +5.6  | Dotterfertilitet  | -0.5  |
| Kofertilitet   | -0.3  | Kvigfertilitet    | 1.4   |
| Cow Livability | +2.8  | Heifer Livability | +0.8  |
| Celltal        | +2.70 | MAST              | 0.5%  |
| METR           | 1.6%  | KETO              | 1.5%  |
| DA             | 0.7%  | RETP              | 0.0%  |
| Feed Saved     | -31   | MFEV              | +0.2% |
| Zoetis DWP\$   | \$805 | Zoetis WT\$       | \$124 |
| Zoetis CW\$    | \$-10 |                   |       |

### KALVNINGSEGENSKAPER

|                         |      |         |                 |      |         |
|-------------------------|------|---------|-----------------|------|---------|
| Kalvningsegenskaper Far | 1.9% | 62% Rel | Far Dödsfödslar | 5.9% | 59% Rel |
| Kalvningsegenskaper Dtr | 2.2% | 60% Rel | MF Dödsfödslar  | 5.2% | 59% Rel |



Kodnr: 9-8576 • Stbnr: 93360 • Pris: 295 kr.  
511, 430 kr/dos.



### AltaREFINE-RED

011H015682

KOEPON ALTAREFINE-RED-ET

AltaTOP-RED X SALVATORE RC X RUBICON

HONLDM000597117020 | DOB 6/23/2020

Kappa-Casein EE | Beta-Casein A1A1

Haplotyper HH1F HH2F HH3F HH4F HH5F HCDF HH6F

Genetiska koder TC TD TL TP TV TY

aAa 243 | DMS 126,123 | EFI 11.2% | RHA 100%

Nuvarande test USA-202212

CDCB & HA-USA Genetic Evaluations 12/2022

#### HELHET Baserat på 0 Döttrar i 0 Bes. (77% Rel)

|     |       |       |      |
|-----|-------|-------|------|
| TYP | 1.49  | Juver | 1.59 |
| BWC | -0.37 | Ben   | 1.49 |

|                | -2 | -1 | 0 | 1 | 2 |                 |
|----------------|----|----|---|---|---|-----------------|
| Storlek        |    |    |   |   |   | +0.91 Reslig    |
| Styrka         |    |    |   |   |   | -0.16 Svag      |
| Kroppsdjup     |    |    |   |   |   | -0.10 Grunt     |
| Kroppsform     |    |    |   |   |   | +1.05 Öppen     |
| Korslutning    |    |    |   |   |   | -0.03 Hög       |
| Korsbredd      |    |    |   |   |   | +0.22 Brett     |
| Benvinkel      |    |    |   |   |   | +0.43 Vinklad   |
| Ben Bakifrån   |    |    |   |   |   | +1.80 Parallell |
| Kotvinkel      |    |    |   |   |   | +0.90 Brant     |
| Klövar & Ben   |    |    |   |   |   | +1.56 Hög       |
| Framjuver      |    |    |   |   |   | +1.59 Starkt    |
| Bakjuverhöjd   |    |    |   |   |   | +2.36 Hög       |
| Bakjuverbredd  |    |    |   |   |   | +2.14 Brett     |
| Juveligament   |    |    |   |   |   | +0.64 Starkt    |
| Juverdjuv      |    |    |   |   |   | +1.30 Grunt     |
| Spenplac. Fram |    |    |   |   |   | +0.57 Tät       |
| Spenplac. Bak  |    |    |   |   |   | +0.47 Tät       |
| Spenlängd      |    |    |   |   |   | -0.25 Kort      |

#### STAMTAVLA

|      |                        |
|------|------------------------|
| Far  | KOEPON ALTATOP-RED-ET  |
| DAM  | LAKESIDE UPS RED RANGE |
| MGS  | MR SALVATORE RC-ET     |
| MGD  | DE OOSTERHOF DG ROSE D |
| MGGS | EDG RUBICON-ET         |
| MGGD | TELGTER AIKMAN DOREEN  |

- Juver och Ben
- Låga celler
- PL 6,7

Kodnr: 9-8575 • Stbnr: 93359 • Pris: 295 kr.  
511, 430 kr/dos.



### AltaTRY-RED

011H015786

TRENT-WAY-JS ALTATRY-RED-ET

TOMCRUISE X KING ROYAL X SILVER

H0840M003213815980 | DOB 6/17/2020

Kappa-Casein BB | Beta-Casein A1A1

Haplotyper HH1F HH2F HH3F HH4F HH5F HCDF HH6F

Genetiska koder TC TD TL TP TV TY

aAa 432 | DMS 234,246 | EFI 11.4% | RHA 99%

Nuvarande test USA-202212

CDCB & HA-USA Genetic Evaluations 12/2022

#### HELHET Baserat på 0 Döttrar i 0 Bes. (78% Rel)

|     |      |       |      |
|-----|------|-------|------|
| TYP | 1.68 | Juver | 1.65 |
| BWC | 0.66 | Ben   | 0.50 |

|                | -2 | -1 | 0 | 1 | 2 |                 |
|----------------|----|----|---|---|---|-----------------|
| Storlek        |    |    |   |   |   | +1.68 Reslig    |
| Styrka         |    |    |   |   |   | +1.01 Stark     |
| Kroppsdjup     |    |    |   |   |   | +1.18 Djup      |
| Kroppsform     |    |    |   |   |   | +1.54 Öppen     |
| Korslutning    |    |    |   |   |   | -0.03 Hög       |
| Korsbredd      |    |    |   |   |   | +1.05 Brett     |
| Benvinkel      |    |    |   |   |   | -1.16 Rak       |
| Ben Bakifrån   |    |    |   |   |   | +0.75 Parallell |
| Kotvinkel      |    |    |   |   |   | +1.14 Brant     |
| Klövar & Ben   |    |    |   |   |   | +0.85 Hög       |
| Framjuver      |    |    |   |   |   | +1.98 Starkt    |
| Bakjuverhöjd   |    |    |   |   |   | +2.49 Hög       |
| Bakjuverbredd  |    |    |   |   |   | +2.60 Brett     |
| Juveligament   |    |    |   |   |   | +1.01 Starkt    |
| Juverdjuv      |    |    |   |   |   | +1.19 Grunt     |
| Spenplac. Fram |    |    |   |   |   | +1.07 Tät       |
| Spenplac. Bak  |    |    |   |   |   | +0.95 Tät       |
| Spenlängd      |    |    |   |   |   | -0.61 Kort      |

#### STAMTAVLA

|      |                             |
|------|-----------------------------|
| Far  | OCD SAWYER TOMCRUISE-ET     |
| DAM  | TRENT-WAY-JS ROSETTA-ET     |
| MGS  | PLAIN-KNOLL KING ROYAL-ET   |
| MGD  | Y-WHISPER SILVER ROYALTY-ET |
| MGGS | SEAGULL-BAY SILVER-ET       |
| MGGD | MORNINGVIEW UNO REGINA-ET   |

- Kropp
- Juver
- Robot, mjölkshastighet 106

|     |      |      |     |
|-----|------|------|-----|
| TPI | 2788 | NM\$ | 794 |
|-----|------|------|-----|



#### PRODUKTION

|         |           |         |      |       |
|---------|-----------|---------|------|-------|
| Mjolk   | +1539 Lbs | 80% Rel | CM\$ | \$800 |
| Protein | +47 Lbs   | 0.00%   | FM\$ | \$781 |
| Fett    | +48 Lbs   | -0.04%  | GM\$ | \$718 |

#### Mjolkshastighet 94

Baserat på 0 Döttrar i 0 Bes. (100% US Döttrar)

Mjolk - US Döttr.

Fettavkastning US Döttr.

Proteinavkastning - US Döttr.

#### HÄLSOEGENSKAPER

|                |       |                   |       |
|----------------|-------|-------------------|-------|
| Livslängd      | +6.7  | Dotterfertilitet  | +0.4  |
| Kofertilitet   | 0.8   | Kvigfertilitet    | 1.2   |
| Cow Livability | +2.5  | Heifer Livability | +0.4  |
| Celltal        | +2.72 | MAST              | 0.7%  |
| METR           | 1.9%  | KETO              | 2.1%  |
| DA             | 0.9%  | RETP              | 0.0%  |
| Feed Saved     | 35    | MFEV              | +0.1% |
| Zoetis DWP\$   | \$621 | Zoetis WT\$       | \$31  |
| Zoetis CW\$    | \$-82 |                   |       |

#### KALVNINGSEGENSKAPER

|                         |      |         |                 |      |         |
|-------------------------|------|---------|-----------------|------|---------|
| Kalvningsegenskaper Far | 2.3% | 62% Rel | Far Dödsfödslar | 5.2% | 58% Rel |
| Kalvningsegenskaper Dtr | 2.4% | 59% Rel | MF Dödsfödslar  | 4.1% | 57% Rel |

|     |      |      |     |
|-----|------|------|-----|
| TPI | 2568 | NM\$ | 481 |
|-----|------|------|-----|



#### PRODUKTION

|         |          |         |      |       |
|---------|----------|---------|------|-------|
| Mjolk   | +692 Lbs | 81% Rel | CM\$ | \$498 |
| Protein | +48 Lbs  | +0.09%  | FM\$ | \$351 |
| Fett    | +51 Lbs  | +0.09%  | GM\$ | \$448 |

#### Mjolkshastighet 106

Baserat på 0 Döttrar i 0 Bes. (100% US Döttrar)

Mjolk - US Döttr.

Fettavkastning US Döttr.

Proteinavkastning - US Döttr.

#### HÄLSOEGENSKAPER

|                |       |                   |       |
|----------------|-------|-------------------|-------|
| Livslängd      | +1.4  | Dotterfertilitet  | -1.4  |
| Kofertilitet   | -0.4  | Kvigfertilitet    | 0.3   |
| Cow Livability | -1.3  | Heifer Livability | +1.0  |
| Celltal        | +2.93 | MAST              | 0.5%  |
| METR           | 0.3%  | KETO              | 1.5%  |
| DA             | 0.2%  | RETP              | -0.1% |
| Feed Saved     | -87   | MFEV              | -0.1% |
| Zoetis DWP\$   | \$396 | Zoetis WT\$       | \$-29 |
| Zoetis CW\$    | \$-41 |                   |       |

#### KALVNINGSEGENSKAPER

|                         |      |         |                 |      |         |
|-------------------------|------|---------|-----------------|------|---------|
| Kalvningsegenskaper Far | 2.6% | 72% Rel | Far Dödsfödslar | 6.4% | 64% Rel |
| Kalvningsegenskaper Dtr | 2.6% | 71% Rel | MF Dödsfödslar  | 5.9% | 65% Rel |

Kodnr: 9-7931 • Stbnr: 92804 • Pris: 280 kr.  
511, 410 kr/dos.



### AltaAVO-RED

011H000595

KCKC ALTA AVO-RED-ET

SALVATORE RC X DELTA X SUPERSIRE

H0840M003149233441 | DOB 11/3/2017

Kappa-Casein BE | Beta-Casein A1A1

Haplotyper HH1F HH2F HH3F HH4F HH5F HCFD HH6F

Genetiska koder TC TD TL TP TY

aAa 342 | DMS 561,456 | EFI 10.4 % | RHA 100%

Nuvarande test USA-202212

CDCB & HA-USA Genetic Evaluations 12/2022

#### HELHET Baserat på 14 Döttrar i 5 Bes. (83% Rel)

|     |       |       |      |
|-----|-------|-------|------|
| TYP | 1.56  | Juvel | 1.05 |
| BWC | -0.28 | Ben   | 1.16 |

|               | -2 | -1 | 0 | 1 | 2 |                 |
|---------------|----|----|---|---|---|-----------------|
| Storlek       |    |    |   |   |   | +0.61 Reslig    |
| Styrka        |    |    |   |   |   | +0.23 Stark     |
| Kroppsdjup    |    |    |   |   |   | +0.65 Djup      |
| Kroppform     |    |    |   |   |   | +1.54 Öppen     |
| Korslutning   |    |    |   |   |   | -0.85 Hög       |
| Korsbredd     |    |    |   |   |   | +0.49 Brett     |
| Benvinkel     |    |    |   |   |   | +1.17 Vinklad   |
| Ben Bakifrån  |    |    |   |   |   | +1.31 Parallell |
| Kotvinkel     |    |    |   |   |   | +0.73 Brant     |
| KLövar & Ben  |    |    |   |   |   | +1.24 Hög       |
| Framjuvel     |    |    |   |   |   | +1.17 Starkt    |
| Bakjuvelhöjd  |    |    |   |   |   | +1.73 Hög       |
| Bakjuvelbredd |    |    |   |   |   | +1.73 Brett     |
| Juveligament  |    |    |   |   |   | +0.26 Starkt    |
| Juveldjup     |    |    |   |   |   | +0.42 Grunt     |
| Spnplac. Fram |    |    |   |   |   | +0.47 Tät       |
| Spnplac. Bak  |    |    |   |   |   | +0.34 Tät       |
| Spnlängd      |    |    |   |   |   | +0.44 Lång      |

#### STAMTAVLA

|      |                             |
|------|-----------------------------|
| Far  | MR SALVATORE RC-ET          |
| DAM  | KCKC DELTA AVERY-ET         |
| MGS  | MR MOGUL DELTA 1427-ET      |
| MGD  | MIS ADERYN ASTEROID 2002-ET |
| MGGS | SEAGULL-BAY SUPERSIRE-ET    |
| MGGD | KHW SUPER ADERYN-ET         |

|     |      |      |     |
|-----|------|------|-----|
| TPI | 2526 | NM\$ | 577 |
|-----|------|------|-----|



#### PRODUKTION

|         |           |         |      |       |
|---------|-----------|---------|------|-------|
| Mjolk   | +1534 Lbs | 90% Rel | CM\$ | \$576 |
| Protein | +38 Lbs   | -0.03%  | FM\$ | \$609 |
| Fett    | +32 Lbs   | -0.09%  | GM\$ | \$463 |

#### Mjolkhastighet 94

Baserat på 46 Döttrar i 19 Bes. (100% US Döttrar)

|                               |            |      |
|-------------------------------|------------|------|
| Mjolk - US Döttr.             | +28405 Lbs | 100% |
| Fettavkastning US Döttr.      | +1081 Lbs  | 3.8% |
| Proteinavkastning - US Döttr. | +862 Lbs   | 3.0% |

#### HÄLSOEGENSKAPER

|                |       |                   |       |
|----------------|-------|-------------------|-------|
| Livslängd      | +5.2  | Dotterfertilitet  | -1.5  |
| Kofertilitet   | -1.7  | Kvigfertilitet    | -1.1  |
| Cow Livability | +2.0  | Heifer Livability | -0.1  |
| Celltal        | +2.83 | MAST              | 0.7%  |
| METR           | 0.6%  | KETO              | 0.7%  |
| DA             | 0.7%  | RETP              | -0.3% |
| Feed Saved     | 63    | MFEV              | +0.1% |
| Zoetis DWP\$   | \$387 | Zoetis WT\$       | \$-78 |
| Zoetis CW\$    | \$-34 |                   |       |

#### KALVNINGSEGENSKAPER

|                     |      |         |                 |      |         |
|---------------------|------|---------|-----------------|------|---------|
| Kalvningsegenskaper | 1.8% | 91% Rel | Far Dödsfödslar | 5.7% | 82% Rel |
| Kalvningsegenskaper | 1.9% | 71% Rel | MF Dödsfödslar  | 4.5% | 65% Rel |

Kodnr: 9-4468 • Stbnr: 1140  
511, 420 kr/dos.



#### HELHET Baserat på 2626 Döttrar i 110 Bes. (99% Rel)

|     |      |     |      |
|-----|------|-----|------|
| TYP | 0.80 | JUI | 2.30 |
| BWC | 0.28 |     |      |

|               | -2 | -1 | 0 | 1 | 2 |                |
|---------------|----|----|---|---|---|----------------|
| Storlek       |    |    |   |   |   | +1.0 Reslig    |
| Styrka        |    |    |   |   |   | -0.2 Svag      |
| Kroppform     |    |    |   |   |   | +0.6 Öppen     |
| Korslutning   |    |    |   |   |   | +1.6 Sluttande |
| Korsbredd     |    |    |   |   |   | +0.1 Brett     |
| Benvinkel     |    |    |   |   |   | +0.7 Vinklad   |
| Kotvinkel     |    |    |   |   |   | -0.4 Låg       |
| Framjuvel     |    |    |   |   |   | +0.2 Starkt    |
| Bakjuvelhöjd  |    |    |   |   |   | +0.5 Hög       |
| Bakjuvelbredd |    |    |   |   |   | +0.6 Brett     |
| Juveligament  |    |    |   |   |   | +0.5 Starkt    |
| Juveldjup     |    |    |   |   |   | -0.1 Djupt     |
| Spnplac. Fram |    |    |   |   |   | +1.4 Tät       |
| SPB - Sida    |    |    |   |   |   | -0.7 Bred      |
| SPB - Bak     |    |    |   |   |   | +1.4 Tät       |
| Spnlängd      |    |    |   |   |   | -0.4 Kort      |

#### STAMTAVLA

|      |                               |
|------|-------------------------------|
| Far  | ALL LYNN'S VALENTINO IRWIN-ET |
| DAM  | CDF DOMINICAN IMPULS R626-ET  |
| MGS  | SUNSET CANYON DOMINICAN-ET    |
| MGD  | ALL LYNN'S IMPULS VIRGINIA-ET |
| MGGS | Q IMPULS                      |
| MGGD | D&E PARAMOUNT VIOLET          |



Ahlem Steve Loreli 50088  
Ahlem Farms; Hilmar, CA



Ahlem Steve Pumpkin 50185  
Ahlem Farms; Hilmar, CA



Berrys Steve Jemina

### STEVE

011JE01259

CDF Irwin Steve

IRWIN X DOMINICAN X Q IMPULS

JE840M003006436334 | DOB 8/25/2014

Kappa-Casein BB | Beta-Casein A2A2 | BBR 100

Haplotyper JH1C JNSF

Genetiska koder JNSF

aAa 432 | DMS 345,234 | GFI 10.4 %

Nuvarande test USA-202212

CDCB & AJCA Genetic Evaluations 12/2022

|     |     |      |     |
|-----|-----|------|-----|
| JPI | 111 | CM\$ | 620 |
|-----|-----|------|-----|



Available USA, Canada and EU

#### PRODUKTION

|         |          |         |      |       |
|---------|----------|---------|------|-------|
| Mjolk   | +524 Lbs | 99% Rel | NM\$ | \$611 |
| Protein | +35 Lbs  | +0.07%  | FM\$ | \$524 |
| Fett    | +89 Lbs  | +0.29%  | GM\$ | \$474 |

Baserat på 4952 Döttrar i 206 Bes. (97% US Döttrar)

|                               |            |      |
|-------------------------------|------------|------|
| Mjolk - US Döttr.             | +22059 Lbs | 97%  |
| Fettavkastning US Döttr.      | +1111 Lbs  | 5.0% |
| Proteinavkastning - US Döttr. | +814 Lbs   | 3.7% |

#### HÄLSOEGENSKAPER

|                |       |                   |        |
|----------------|-------|-------------------|--------|
| Livslängd      | +3.4  | Dotterfertilitet  | -3.8   |
| Kofertilitet   | -3.3  | Kvigfertilitet    | 0.5    |
| Cow Livability | +0.9  | Heifer Livability | +1.5   |
| Celltal        | +3.09 | MAST              | 1.5%   |
| METR           | 0.5%  | KETO              | -0.6%  |
| DA             | -0.2% | RETP              | 0.0%   |
| Feed Saved     |       | MFEV              | +0.2%  |
| Zoetis DWP\$   | \$576 | Zoetis WT\$       | \$-236 |
| Zoetis CW\$    | \$120 |                   |        |

- Mjolk
- Högt PL
- Kvigtjur



Kodnr: 9-9822 • Stbnr: 1154  
511, 420 kr/dos.



## AltaMONTRA {6}

011JE01369

JX PEAK ALTAMONTRA {6}-ET

VICEROY X HARRIS X DIMENSION

JE840M003140986383 | DOB 10/10/2017

Kappa-Casein AB | Beta-Casein A1A2 | BBR 100

Haplotyper JH1F JNSF  
Genetiska koder JNSF

aAa 243 | DMS 126,246 | GFI 8.7 %

Nuvarande test USA-202212  
CDCB & AJCA Genetic Evaluations 12/2022

### HELHET Baserat på 928 Döttrar i 55 Bes. (99% Rel)

| TYP            | 1.20 | JUI | 3.77 |   |      |         |
|----------------|------|-----|------|---|------|---------|
| BWC            | 1.06 |     |      |   |      |         |
|                | -2   | -1  | 0    | 1 | 2    |         |
| Storlek        |      |     |      |   | +1.2 | Reslig  |
| Styrka         |      |     |      |   | +1.2 | Stark   |
| Kroppsdjup     |      |     |      |   | +1.1 | Öppen   |
| Korslutning    |      |     |      |   | -0.5 | Hög     |
| Korsbredd      |      |     |      |   | +0.9 | Brett   |
| Benvinkel      |      |     |      |   | +1.0 | Vinklad |
| Kotvinkel      |      |     |      |   | +0.3 | Brant   |
| Framjuver      |      |     |      |   | +2.0 | Starkt  |
| Bakjuverhöjd   |      |     |      |   | +0.6 | Hög     |
| Bakjuverbredd  |      |     |      |   | +0.6 | Brett   |
| Juveligament   |      |     |      |   | +0.4 | Starkt  |
| Juverdjun      |      |     |      |   | +0.3 | Grunt   |
| Spenplac. Fram |      |     |      |   | +0.8 | Tät     |
| SPB - Sida     |      |     |      |   | -1.4 | Bred    |
| SPB - Bak      |      |     |      |   | +0.5 | Tät     |
| Spenlängd      |      |     |      |   | +0.2 | Lång    |

### STAMTAVLA

|      |                                  |
|------|----------------------------------|
| Far  | CDF VICEROY-et                   |
| DAM  | JX DUTCH HOLLOW HARRIS MOLLY {5} |
| MGS  | JX SCHULTZ VOLCANO HARRIS {4}    |
| MGD  | DUTCH HOLLOW DIMENSION MONIKA    |
| MGGS | SUNSET CANYON DIMENSION ET       |

|     |     |      |     |
|-----|-----|------|-----|
| JPI | 111 | CM\$ | 490 |
|-----|-----|------|-----|

### PRODUKTION

|   |           |         |            |       |
|---|-----------|---------|------------|-------|
| Mjök  | +1206 Lbs | 99% Rel | NM\$       | \$485 |
| Protein   | +48 Lbs   | +0.02%  | FM\$       | \$431 |
| Fett  | +62 Lbs   | +0.02%  | GM\$       | \$436 |
| Baserat på 2068 Döttrar i 92 Bes. (100% US Döttrar) |           |         |            |       |
| Mjök - US Döttr.                                    |           |         | +23058 Lbs | 100%  |
| Fettavkastning US Döttr.                            |           |         | +1098 Lbs  | 4.8%  |
| Proteinavkastning - US Döttr.                       |           |         | +824 Lbs   | 3.6%  |

### HÄLSOEGENSKAPER

|                |       |                   |        |
|----------------|-------|-------------------|--------|
| Livslängd      | +2.0  | Dotterfertilitet  | -1.3   |
| Kofertilitet   | 0.2   | Kvigfertilitet    | 3.5    |
| Cow Livability | -0.9  | Heifer Livability | +0.4   |
| Celltal        | +3.05 | MAST              | -2.8%  |
| METR           | 0.7%  | KETO              | 0.4%   |
| DA             | 0.0%  | RETP              | -0.3%  |
| Feed Saved     |       | MFEV              | +0.2%  |
| Zoetis DWP\$   | \$496 | Zoetis WT\$       | \$-167 |
| Zoetis CW\$    | \$36  |                   |        |



Kodnr: 9-1532 • Pris: 311 kr.  
511, 440 kr/dos.

## REYNOLDS

9AY00133

AY840003205149285

Född den: September 23, 2019  
Beta-Kasein: A1A1  
Kappa-Kasein: AE  
EFI: 8.5%

PALMYRA LOCHINVAR REYNOLDS-ET \*TF AMF AH1T AH2T AHCT

LOCHINVAR X BERKELY X POKER

Fader: LIBBY'S LOCHINVAR

Mor: PALMYRA BERKELY P RUTH-ET EX-94

3-10 2X 323D 14,542 kgM 3.9% 570 kgF 3.0% 435 kgP

MF: PALMYRA BENDIG BERKELY-ET



DAM Palmyra Berkely P Ruth-ET



Maternal Sister Palmyra Predator B Ruthless-ET



MGD Palmyra Poker LH Rosy-ET

|            |     |
|------------|-----|
| INDEX      |     |
| PTI        | 469 |
| NM\$       | 196 |
| CM \$      | 185 |
| Feed Saved |     |

|                      |      |
|----------------------|------|
| TYP                  |      |
| TYP                  | 0.70 |
| TYP säkerhet %       | 49   |
| Döttrar/Besättningar | 0/0  |

|                      |       |
|----------------------|-------|
| PRODUKTION           |       |
| PTA Mjök Lbs         | 956   |
| PTA Protein Lbs      | 12    |
| PTA Protein (%)      | -0.09 |
| PTA Fett Lbs         | 24    |
| PTA Fett (%)         | -0.07 |
| Produktion säkerhet% | 53    |
| Döttrar/Besättningar |       |

### MANAGEMENT EGENSKAPER

|                                  |         |
|----------------------------------|---------|
| Dräktighetslängd/Säkerhet %      | -0.3/48 |
| Produktiv livslängd/Säkerhet %   | 1.3/43  |
| Livsvilja/Säkerhet %             | -0.6/34 |
| Tidig första kalvning/Säkerhet % | 1.3/36  |
| Celltal/Säkerhet %               | 3.07/48 |
| Mjök hastighet/Säkerhet %        | 99/35   |

### DOTTER FERTILITET

|                |         |
|----------------|---------|
| DPR/Säkerhet % | -1.3/41 |
| HCR/Säkerhet % | 0.7/35  |
| CCR/Säkerhet % | -0.9/40 |

### SIRE FERTILITY

|                |        |
|----------------|--------|
| SCR/Säkerhet % | 1.3/52 |
|----------------|--------|

### TYP EGENSKAPER

|                |             |       |              |
|----------------|-------------|-------|--------------|
| Storlek        | låg         | 3.40  | reslig       |
| Styrka         | vek         | 0.50  | starkt       |
| Kroppsdjup     | grund       | 0.30  | djup         |
| Mjöktyp        | täta revben | 0.90  | öppna revben |
| Kors bredd     | smalt       | 2.00  | brett        |
| Korslutning    | höga bärben | -0.50 | sluttande    |
| Ben sidan      | rak         | -0.80 | vinklad      |
| Kotvinkel      | låg         | 0.80  | hög          |
| Framjuver      | svagt       | 2.20  | starkt       |
| Bakjuver höjd  | låg         | 2.80  | hög          |
| Bakjuver bredd | smalt       | 1.70  | brett        |
| Juveligament   | svagt       | 1.00  | starkt       |
| Juver djup     | djup        | 2.70  | grund        |
| Spenplac fram  | vid         | 0.30  | tät          |
| Spenlängd      | kort        | 1.70  | lång         |

Information for December 6, 2022, provided by the following:  
Production: CDCB-Genomic; Type: CDCB/ABA Genomic; Milking Speed: CDN Evaluation;  
Qualifies for export to the E.U.

- Reslig
- Juver
- Mjök



ANGUS

**KEYSTONE AMPLIFY** 011AN02303



Kodnr: 7-1981 • Stbnr: 700793 • Pris: 115 kr.

- ▲ EU Qualified
- ▲ Curve bending Enhance son with double digit CED, negative BW and strong performance
- ▲ Strong maternal pedigree, stemming from the famous Sitz Henrietta Pride family
- ▲ All \$Values rank in the top 25% or higher

Registration: 19574654  
 Birthdate: 2019/11/19  
 Tattoo: 147G  
 Breed: Angus

SydGen Googol  
 SydGen Exceed 3223  
 SydGen Forever Lady 1255  
 SydGen Enhance  
 SydGen Liberty GA 8627  
 SydGen Rita 2618  
 Fox Run Rita 9308  
 G A R Grid Maker  
 S A V Bismarck 5682  
 S A V Abigale 0451  
 PF 5682 HENRIETTA PRIDE 0533  
 Connealy Onward  
 Sitz Henrietta Pride 643T  
 Sitz Henrietta Pride 81M

| EPD - AMERICAN ANGUS ASSOCIATION - 11/2022 |            |      |       |      |      |         |      |          |       |     |          |     |     |      |     |
|--|------------|------|-------|------|------|---------|------|----------|-------|-----|----------|-----|-----|------|-----|
|  | Production |      |       |      |      |         |      | Maternal |       |     |          |     |     |      |     |
|  | CED        | BW   | WW    | YW   | RADG | DMI     | YH   | SC       | HP    | CEM | MILK     | MW  | MH  | \$EN |     |
| EPD  | 14         | -1.7 | 69    | 129  | .26  | 1.86    | .7   | 1.22     | 11.2  | 10  | 34       | 67  | .3  | -26  |     |
| ACC  | .35        | .49  | .43   | .38  | .34  | .34     | .43  | .42      | .26   | .34 | .35      | .38 | .40 |      |     |
| % Rank                                     | 4          | 5    | 30    | 20   | 40   | 95      | 35   | 30       | 60    | 30  | 10       | 50  | 60  | 75   |     |
|  | Management |      |       |      |      | Carcass |      |          |       |     | \$Values |     |     |      |     |
|  | DOC        | CLAW | ANGLE | PAP  | HS   | CW      | MARB | RE       | FAT   | \$M | \$W      | \$F | \$G | \$B  | \$C |
| EPD  | 29         | .32  | .38   | 4.85 | .55  | 56      | .65  | 1.08     | -.006 | 77  | 76       | 99  | 61  | 160  | 285 |
| ACC  | .35        | .30  | .30   | .28  | .31  | .41     | .38  | .38      | .34   |     |          |     |     |      |     |
| % Rank                                     | 10         | 3    | 10    | 95   | 55   | 30      | 45   | 3        | 25    | 15  | 10       | 20  | 25  | 20   | 15  |

Pris gäller vid 25 st mjölkrasdosor

ANGUS

**HF HIDDEN FIGURES 53E** 011AN01347



Kodnr: 7-1869 • Stbnr: 700554 • Pris: 95 kr.

Registration: 18968636  
 Birthdate: 2017/01/17  
 Tattoo:  
 Breed: Angus

Sitz Dash 10277  
 Barstow Cash  
 Barstow Queen W16  
 BSF Hot Lotto 1401  
 Silveiras El Capitan 6510  
 BSF Princess EL Cap W2  
 B S F Princess TCF N2  
 Ring Creek Bardolene 69W  
 Ring Creek Burl Ives 88Y  
 Heather of Ring Creek 447W  
 HF Mistress 220B  
 S A V 004 Predominant 4438  
 HF Mistress 42U  
 HF Mistress 6M

|        | PRODUCTION |      |       |     |      |         |      | MATERNAL |      |     |          |     |     |      |     |
|--------|------------|------|-------|-----|------|---------|------|----------|------|-----|----------|-----|-----|------|-----|
|        | CED        | BW   | WW    | YW  | RADG | DMI     | YH   | SC       | HP   | CEM | MILK     | MW  | MH  | \$EN |     |
| EPD    | 6          | -.6  | 62    | 101 | .22  | .32     | .5   | .87      | 8.8  | 10  | 23       | 51  | .3  | -12  |     |
| ACC    | .33        | .53  | .46   | .41 | .30  | .30     | .43  | .38      | .22  | .31 | .34      | .35 | .38 |      |     |
| % Rank | 55         | 15   | 45    | 65  | 75   | 10      | 55   | 50       | 85   | 30  | 75       | 70  | 60  | 40   |     |
|        | MANAGEMENT |      |       |     |      | CARCASS |      |          |      |     | \$VALUES |     |     |      |     |
|        | DOC        | CLAW | ANGLE | PAP | HS   | CW      | MARB | RE       | FAT  | \$M | \$W      | \$F | \$G | \$B  | \$C |
| EPD    | 33         | .63  | .56   | .72 | .94  | 37      | .32  | .28      | .054 | 60  | 62       | 78  | 29  | 108  | 200 |
| ACC    | .32        | .25  | .25   | .25 | .24  | .40     | .36  | .36      | .33  |     |          |     |     |      |     |
| % Rank | 2          | 95   | 85    | 40  | 95   | 75      | 80   | 95       | 95   | 60  | 35       | 65  | 90  | 90   | 90  |

American Angus Association - 11/2022

Pris gäller vid 25 st mjölkrasdosor



**Kodnr: 7-1830 • Stbnr: 700489 • Pris: 110 kr.**



Data

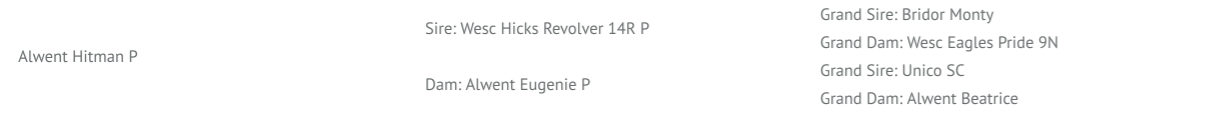
DOB: 26.04.2012

Herd Book No : UK104665500209

AI Code: S2061

Breeder: Steven Nesbitt, Darlington, England.

Pedigree



Comments

- + First Homozygous Polled Charolais Bull standing in Irish AI.
- + She is a powerful cow with embryos being sold into several countries.
- + Hitman's sire Hicks Revolver is a calving ease specialist and is Polled.
- + Purchased for his calving ease, Hitman is in the top 1% for calving in the UK.
- + Hitman's pedigree includes Vougeot, a bull imported from France, who bred exceptionally well for Mr. Nesbitt, and whose semen has been sold worldwide.
- + Hitman is well muscled, with extra length and a good topline.
- + His dam Eugenie has positive values for calving, 200, 400 and 600 day weights and Milk.

Indexes

ICBF PROOF

Additional Pictures



Alwent Illustrated P pictured at 4 months.

**Kodnr: 7-1955 • Stbnr: 700741 • Pris: 110 kr.**



Data

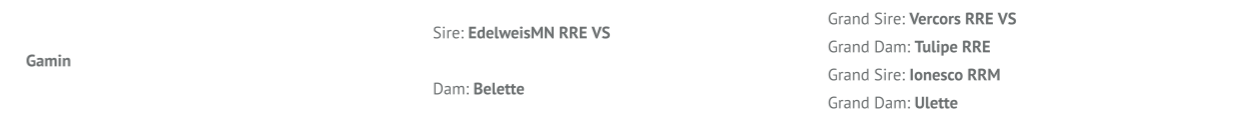
DOB: 23.09.2011

Herd Book No : FR1935129486

AI Code: ZGM

Breeder: Gaec Elevage Mazaud, Chamberet, France

Pedigree



Comments

- + Gamin is by the noted weanling specialist EdelweisMN RRE VS.
- + Edelweis's stamp is early muscle throughout his calves in the Mazaud herd.
- + EdelweisMN has a phenomenal overall index (ISEVR) of 146 in France.
- + EdelweisMN is arguably the most consistent producer of shape currently in France.
- + EdelweisMN semen is not available.
- + EdelweisMN RRE VS (Current figures Oct 2014)
- + IFN CR DM DS FOS ISEVR105  
128 135 112 88 146
- + Gamin stands out for his incredible muscling, exceptional correctness and sheer style.
- + His Linear is outstanding scoring a massive 95 for muscle, however he also scores 78 for skeletal.
- + Gamin has an incredible depth of hindquarter and excellent muscling throughout the loin.
- + He displays perfect locomotion and is very strong on top.
- + Gamin's pedigree is steeped in stars like EdelweisMN, Vercors, Neuf, Ionesco, Moero and Mas du Clo.
- + Bova believe Gamin to be our heaviest muscled Limousin bull purchased to-date!
- + Gamin's calves are extremely consistent like his sire.
- + They are easily calved and are exceptionally quiet.
- + They have early shape, excellent muscling throughout, style, length, weight and excellent function.
- + Gamin has excellent BLUP's and indexes himself.
- + Highly recommended for pedigree use.
- + Gamin is in popular demand from pedigree and commercial breeders alike.

Indexes

ICBF PROOF

Additional Pictures



SIMMENTAL

# X-T BLACK MISSILE 138F 011SM02055



▲ Heterozygous Black, Homozygous Polled

▲ Purebred

Kodnr: 7-1926 • Stbnr: 700669 • Pris: 120 kr  
611, 400 kr/dos.

Registration: ASA 3594131  
Birthdate: 2018/04/16  
Tattoo: LW 138F  
Breed: Simmental

\*\*\*\*\*  
 COME AS U R RED ROCKET  
 \*\*\*\*\*  
 MRL MISSILE 138C  
 \*\*\*\*\*  
 MRL MISS 2423Z  
 \*\*\*\*\*  
 \*\*\*\*\*  
 WHEATLAND PREDATOR 922W  
 \*\*\*\*\*  
 TSN MS PREDATOR 53B  
 \*\*\*\*\*  
 TSN MS FORTUNE 47X  
 \*\*\*\*\*

Pris gäller vid 25 st mjölkkrasdosser

SIMMENTAL

# SIMMENTAL: HARRY



100 kr/Dos

kodnr: 7-1719

stbnr: 700278

▲ Calving Ease

Pris gäller vid 25 st mjölkkrasdosser



# Future Genetics



Jörgen Enock  
jorgen@futuregenetics.se  
Tel - 070 648 22 87  
Future Genetics  
Prästgatan 2  
387 50, Köpingsvik

Rumi Life Calcium



Kvävekärl



Kalvtäcke



Läs mer på

[www.futuregenetics.se](http://www.futuregenetics.se)



Gilla oss på Facebook!

[www.facebook.com/FutureGenetics.se](http://www.facebook.com/FutureGenetics.se)